

GENERAL TERRA COTTA NOTES:

1. CONDUCT SITE SURVEY OF EXISTING TERRA COTTA ELEMENTS PRIOR TO SUBMITTAL OF SHOP DRAWINGS AND FABRICATION OF TERRA COTTA UNITS.
2. IDENTIFY AND CODE TERRA COTTA UNITS TO BE REPLACED.
3. ACTUAL TYPES AND NUMBERS OF TERRA COTTA UNITS TO BE VERIFIED BY ARCHITECT.
4. PROVIDE PHYSICAL SAMPLES, COLLECT MEASUREMENTS, TAKE PHOTOGRAPHS, MAKE FIELD SKETCHES AND RECORD OTHER DATA AS REQUIRED FOR DESIGN AND FABRICATION OF REPLACEMENT TERRA COTTA UNITS.
5. CAREFULLY REMOVE EXISTING UNITS, SALVAGE AND RESET UNITS IF NOT DAMAGED AND AS APPROVED/ DIRECTED BY ARCHITECT.
6. SAMPLE AND DETERMINE COMPRESSIVE STRENGTH OF EXISTING MORTAR. IDENTIFY JOINTS TO BE REPOINTED.
7. ILLUSTRATIVE SAMPLES:
 - CAREFULLY REMOVE EXISTING TERRA COTTA UNITS REQUIRED AS SAMPLES TO USE IN PREPARATION OF MOLDS FOR FABRICATION OF REPLACEMENT PIECES.
 - PACK, CRATE AND DELIVER SAMPLES TO MANUFACTURER'S PLANT. SAMPLES SHALL BE RETAINED BY THE MANUFACTURER.
 - PROVIDE SHORING AND TEMPORARY PROTECTION TO PREVENT MOISTURE PENETRATION INTO STRUCTURE WHERE TERRA COTTA UNITS ARE REMOVED.
8. PROVIDE SHOP DRAWINGS SHOWING:
 - ELEVATIONS, SECTIONS AND DETAILS OF ORNAMENTATION OF EXISTING TERRA COTTA/CFRC TO BE REPLACED AND ADJACENT MATERIALS. DRAWINGS SHOULD INCLUDE CONSTRUCTION OF TERRA COTTA AND ITS RELATIONSHIP TO ADJACENT MATERIALS, PROFILES OF PIECES, DIMENSIONS, JOINT WIDTHS AND BUILT-IN WEEPS AND DRIP EDGES. DRAWINGS SHALL BE 1:8 MIN. SCALE. SHOP DRAWINGS SHALL ALSO INCLUDE RELIEVING ANGLES, VENTS, WEEPS, EXPANSION JOINTS. INDICATE LOCATION AND TYPE OF FLASHINGS TO BE USED.
 - SHOP DRAWINGS SHALL ALSO INCLUDE ANCHORAGE AND GROUTING DESIGNED BY A NYS LICENSED ENGINEER AND COORDINATED WITH TERRA COTTA MANUFACTURER'S REQUIREMENTS. ANCHORAGE DRAWINGS AND CALCULATIONS SHALL BE SUBMITTED AS ONE COMPLETE PACKAGE OF SHOP DRAWINGS.
 - SHOP DRAWINGS SHALL ALSO INCLUDE SETTING DRAWINGS SHOWING THE LAYOUT, NUMBERING AND JOINT SIZES OF TERRA COTTA UNITS.
 - ALL SHOP DRAWINGS, CALCULATIONS AND SETTING DRAWINGS SHALL BE SUBMITTED AS ONE PACKAGE TO ARCHITECT FOR REVIEW. ALL PRODUCTS AND CALCULATIONS ARE TO BE COORDINATED WITH EACH MANUFACTURER'S REQUIREMENTS.

LEGEND

- EXISTING BRICK MASONRY
- EXISTING TERRA COTTA UNITS
- NEW TERRA COTTA UNITS INCLUDED IN THE COMBINED SCOPE FOR BASE BID & ALTERNATES 1 & 3

TERRA COTTA SCOPE:

BASE BID

INCLUDES REPLACEMENT OF 25% OF TERRA COTTA UNITS IN THE SCOPE AS INDICATED BY THE LEGEND.

ALTERNATE 1

INCLUDES REPLACEMENT OF AN ADDITIONAL 25% OF TERRA COTTA UNITS IN THE SCOPE AS INDICATED BY THE LEGEND.

ALTERNATE 3

INCLUDES REPLACEMENT OF AN ADDITIONAL 50% OF TERRA COTTA UNITS IN THE SCOPE AS INDICATED BY THE LEGEND.

SCOPE OF WORK NOTES:

1. THE EXTENT OF TERRA COTTA REPLACEMENT AS PART OF BASE BID, ALTERNATE 1 AND ALTERNATE 3 IS TO BE DETERMINED BY ARCHITECT DURING INITIAL INSPECTION DURING CONSTRUCTION.
2. CONTRACTOR SHALL NOTIFY OWNER REPRESENTATIVE / ARCHITECT IF ADDITIONAL TERRA COTTA REPLACEMENT IS REQUIRED AND GET APPROVAL FOR ADDITIONAL SCOPE PRIOR TO PROCEEDING WITH REPAIR WORK.

- CAREFULLY REMOVE EXISTING DAMAGED TERRA COTTA UNITS; USE HAND TOOLS ONLY. REPLACE W/NEW
- 040130 **TERRA COTTA** UNITS MATCHING EXISTING T.C. CONFIGURATION, TYPE, FINISH, COLOR AND ANCHORING SYSTEM (TYP.)
- 040513 **MORTAR: ASTM C270 TYPE N**; TOOLING TO MATCH EXISTING.

NOTES:

1. T.C. PROFILES AND ANCHORING ARE SHOWN SCHEMATICALLY. VERIFY IN FIELD.
2. EXPOSED WALL FACES MUST HAVE A MIN. 1" THICKNESS.
3. SETTING BEDS MUST HAVE A MIN. 4" DEPTH.
4. PROVIDE PROJECTING PIECES WITH DRIPS.
5. FLASHINGS AND SHEET METAL SHALL BE EMBEDDED IN T.C. JOINTS A MIN. OF 3/4" OR HAVE REGLETS FORMED IN T.C. PIECES.
6. EXAMINE EXISTING CONDITION AND PROVIDE AS REQUIRED GABLE FRAME/BRACING REINFORCEMENT SHOP DRAWINGS, SIGNED, AND SEALED BY PROFESSIONAL ENGINEER LICENSED IN NEW YORK STATE.
7. REPAIR EXISTING GABLE STEEL FRAME/BRACING AS REQUIRED.
8. SCRAPE AND PAINT ANY EXPOSED STEEL FRAME MEMBERS WITH 099713 **COATING: 3ER.**

- PREPARE SUBSTRATE AND APPLY
- 076200 **LIQUID APPLIED FLASHING**, 2 PLY, TO EXPOSED HORIZONTAL FACES OF EXISTING MASONRY

NOTE:
EXTEND FLASHING VERTICALLY 2" MIN. AT ALL TERMINATION POINTS.

LIQUID APPLIED FLASHING NOTES:

1. PREPARE AND APPLY
- 076200 **SUBSTRATE PRIMER** TO ALL SURFACES IN CONTACT WITH RESIN.
2. PREPARE LEVEL AND PATCH SUBSTRATE AS REQUIRED WITH APPROVED BY MANUFACTURER
- 076200 **PATCHING COMPOUND** PRIOR TO APPLICATION OF PRIMER AND MEMBRANE FLASHING ON VERTICAL SURFACES.

EXISTING BACK-UP MASONRY; VERIFY CONDITION.

- 024119 CAREFULLY REMOVE ANY DAMAGED EXISTING BRICK MASONRY AND REPLACE W/
- 040120 **BRICK: ASTM C216, GRADE SW** MATCH EXISTING COLOR, SIZE AND BOND PATTERN
- 040513 **MORTAR: ASTM C270 TYPE N**; TOOLING TO MATCH EXISTING

- SHORE AND PROTECT EXISTING TERRA COTTA UNITS TO REMAIN. IF DAMAGED, REMOVE AND REPLACE W/NEW
- 040130 **TERRA COTTA** UNITS TO MATCH EXISTING.

T2 / A527

INDIVIDUAL SMALL UNIT REPLACEMENT APPLIES TO ALL SIMILAR CONDITIONS

SECTION - REPRESENTS HALF OF GABLE

T6 / A528

COPING STONE UNIT REPLACEMENT APPLIES TO ALL SIMILAR CONDITIONS

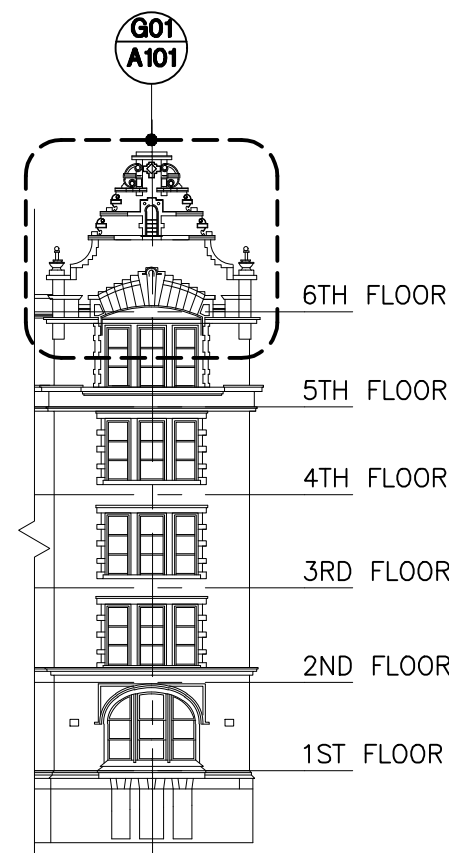
T1 / A527

MULTIPLE SMALL UNIT REPLACEMENT APPLIES TO ALL SIMILAR CONDITIONS

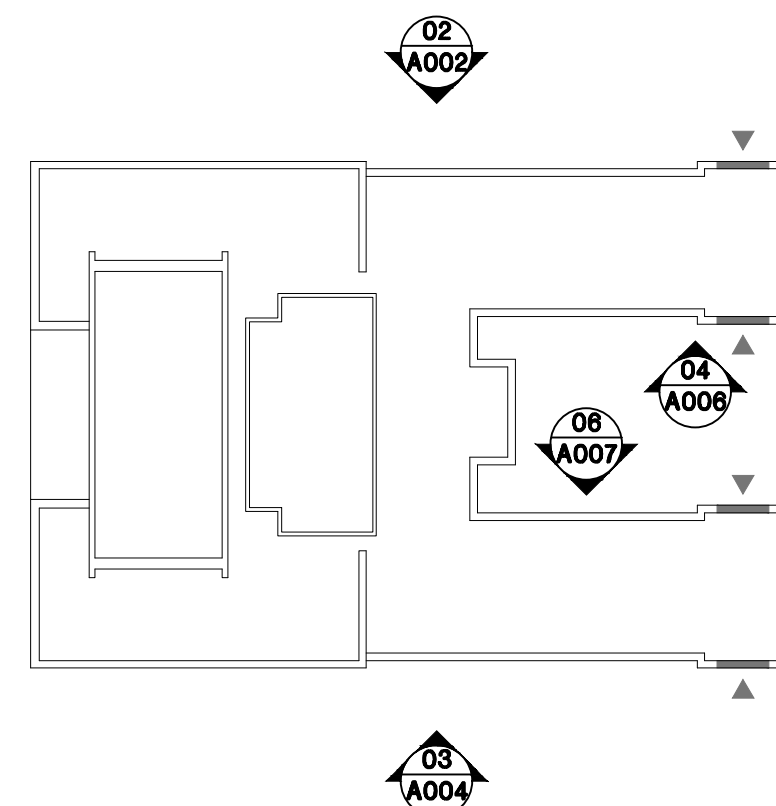
T5 / A527

VERTICAL PROJECTION UNIT REPLACEMENT APPLIES TO ALL SIMILAR CONDITIONS

PHOTO IS REPRESENTATIVE OF GABLE CONFIGURATION

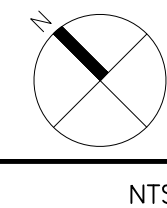


PARTIAL ELEVATION



PLAN

KEY ELEVATION & PLAN (TYP.)

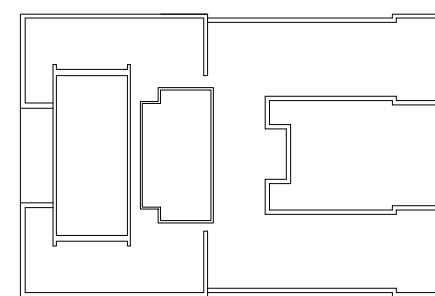


NTS



SUPER STRUCTURES
+ ENGINEERS
ARCHITECTS

32 AVE OF THE AMERICAS
NEW YORK, NY 10013
TEL 212 505 1193
FAX 212 505 1728



RESTORATION
ASSEMBLY DETAILS:
TRC 01

Drawn By: Checked By: Date:

Seal & Signature

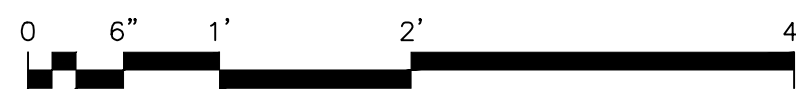
DASNY Project No:

Drawing Number

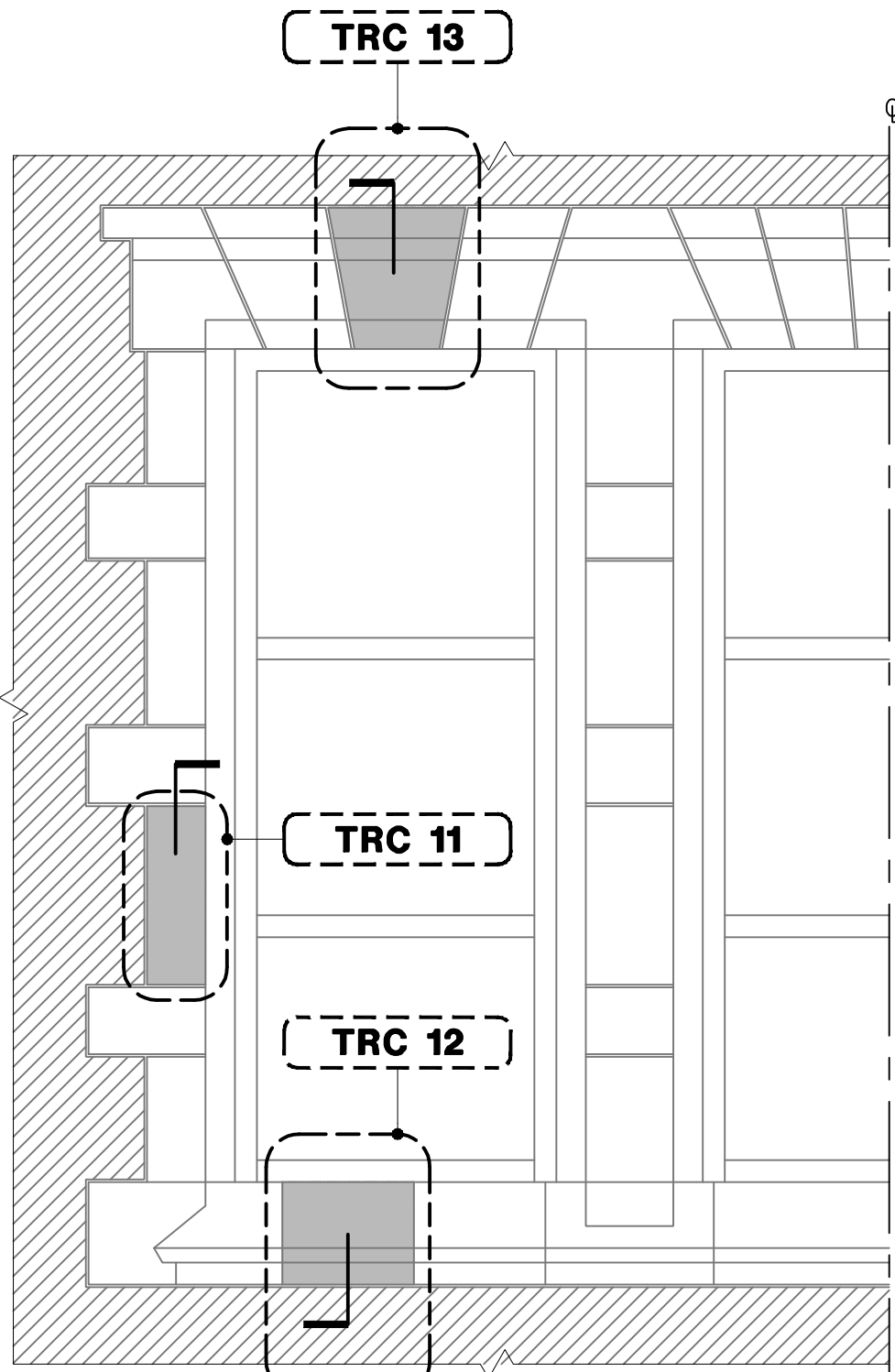
A518.00

Drawing 41 of 52

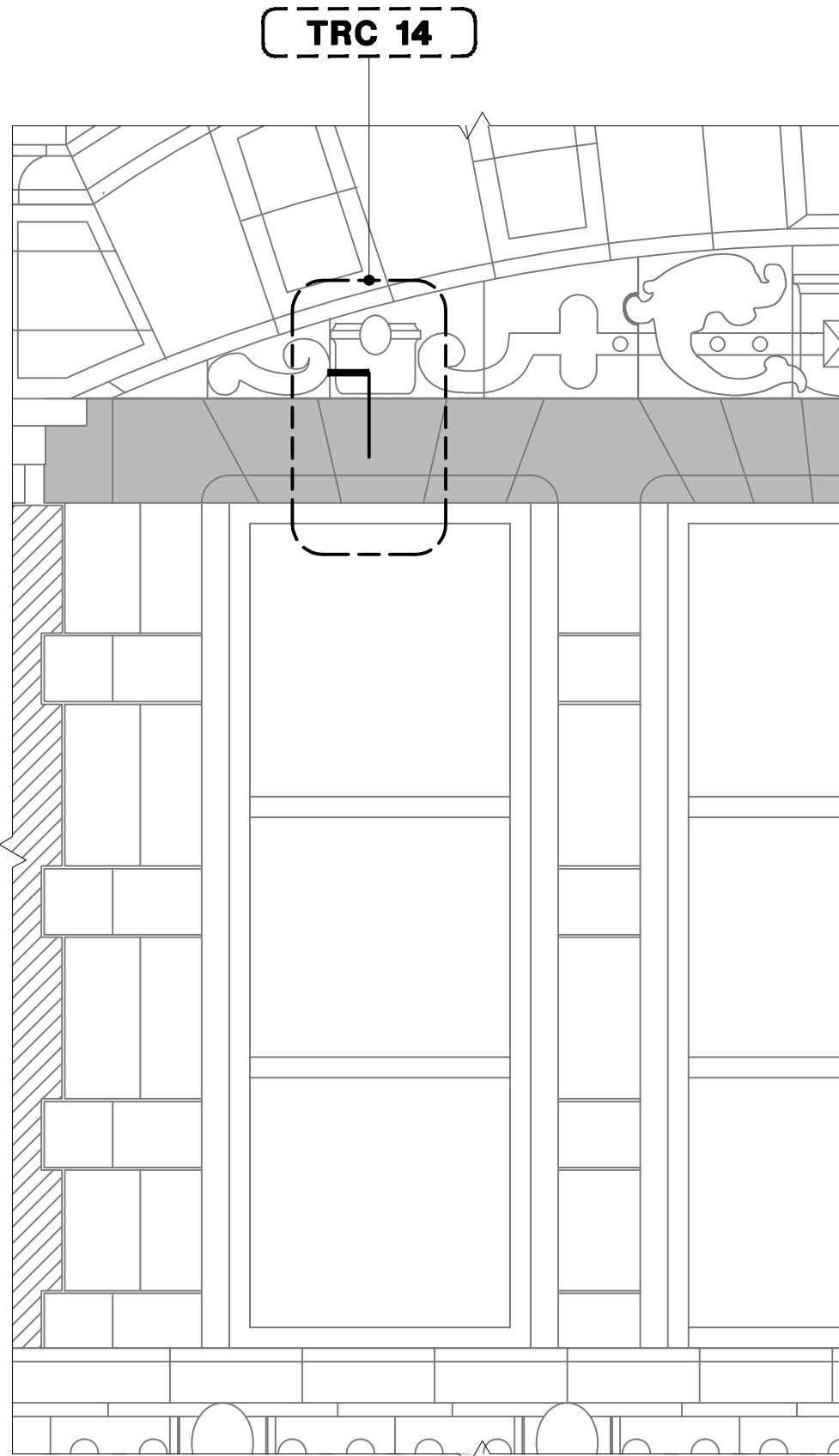
TRC 01 - BASE BID / ALTERNATE 1/3
TERRA COTTA REPLACEMENT AT GABLE TYPE 01 (EA)



SCALE: 1" = 1'-0"



TYPICAL WINDOW ELEVATION BELOW 5TH FLOOR
- REFER TO ELEVATIONS FOR LOCATIONS OF UNITS TO BE REPLACED
- REPRESENTS HALF OF THE WINDOW



TYPICAL WINDOW ELEVATION ABOVE 5TH FLOOR
- REFER TO ELEVATIONS FOR LOCATIONS OF UNITS TO BE REPLACED
- REPRESENTS HALF OF THE WINDOW

- GENERAL TERRA COTTA NOTES:** (APPLY TO ALL DETAILS ON THIS PAGE)
- CONDUCT SITE SURVEY OF EXISTING TERRA COTTA ELEMENTS PRIOR TO SUBMITTAL OF SHOP DRAWINGS AND FABRICATION OF TERRA COTTA UNITS.
 - IDENTIFY AND CODE TERRA COTTA UNITS TO BE REPLACED.
 - ACTUAL TYPES AND NUMBERS OF TERRA COTTA UNITS TO BE VERIFIED.
 - PROVIDE PHYSICAL SAMPLES, COLLECT MEASUREMENTS, TAKE PHOTOGRAPHS, MAKE FIELD SKETCHES AND RECORD OTHER DATA AS REQUIRED FOR DESIGN AND FABRICATION OF REPLACEMENT TERRA COTTA UNITS.
 - CAREFULLY REMOVE EXISTING UNITS. SALVAGE AND RESET UNITS IF NOT DAMAGED AND AS APPROVED/ DIRECTED BY ARCHITECT.
 - SAMPLE AND DETERMINE COMPRESSIVE STRENGTH OF EXISTING MORTAR. IDENTIFY JOINTS TO BE REPOINTED.
 - ILLUSTRATIVE SAMPLES:
 - CAREFULLY REMOVE EXISTING TERRA COTTA UNITS REQUIRED AS SAMPLES TO USE IN PREPARATION OF MOLDS FOR FABRICATION OF REPLACEMENT PIECES.
 - PACK, CRATE AND DELIVER SAMPLES TO MANUFACTURER'S PLANT. SAMPLES SHALL BE RETAINED BY THE MANUFACTURER.
 - PROVIDE SHORING AND TEMPORARY PROTECTION TO PREVENT MOISTURE PENETRATION INTO STRUCTURE WHERE TERRA COTTA UNITS ARE REMOVED.
 - PROVIDE SHOP DRAWINGS SHOWING:
 - ELEVATIONS, SECTIONS AND DETAILS OF ORNAMENTATION OF EXISTING TERRA COTTA/GRFC TO BE REPLACED AND ADJACENT MATERIALS. DRAWINGS SHOULD INCLUDE CONSTRUCTION OF TERRA COTTA AND ITS RELATIONSHIP TO ADJACENT MATERIALS, PROFILES OF PIECES, DIMENSIONS, JOINT WIDTHS AND BUILT-IN WEEPS AND DRIP EDGES. DRAWINGS SHALL BE 1:8 MIN. SCALE. SHOP DRAWINGS SHALL ALSO INCLUDE RELIEVING ANGLES, VENTS, WEEPS, EXPANSION JOINTS. INDICATE LOCATION AND TYPE OF FLASHINGS TO BE USED.
 - SHOP DRAWINGS SHALL ALSO INCLUDE ANCHORAGE AND GROUTING DESIGNED BY A NYS LICENSED ENGINEER AND COORDINATED WITH TERRA COTTA MANUFACTURER'S REQUIREMENTS. ANCHORAGE DRAWINGS AND CALCULATIONS SHALL BE SUBMITTED AS ONE COMPLETE PACKAGE OF SHOP DRAWINGS.
 - SHOP DRAWINGS SHALL ALSO INCLUDE SETTING DRAWINGS SHOWING THE LAYOUT, NUMBERING AND JOINT SIZES OF TERRA COTTA UNITS.
 - ALL SHOP DRAWINGS, CALCULATIONS AND SETTING DRAWINGS SHALL BE SUBMITTED AS ONE PACKAGE TO ARCHITECT FOR REVIEW. ALL PRODUCTS AND CALCULATIONS ARE TO BE COORDINATED WITH EACH MANUFACTURER'S REQUIREMENTS.

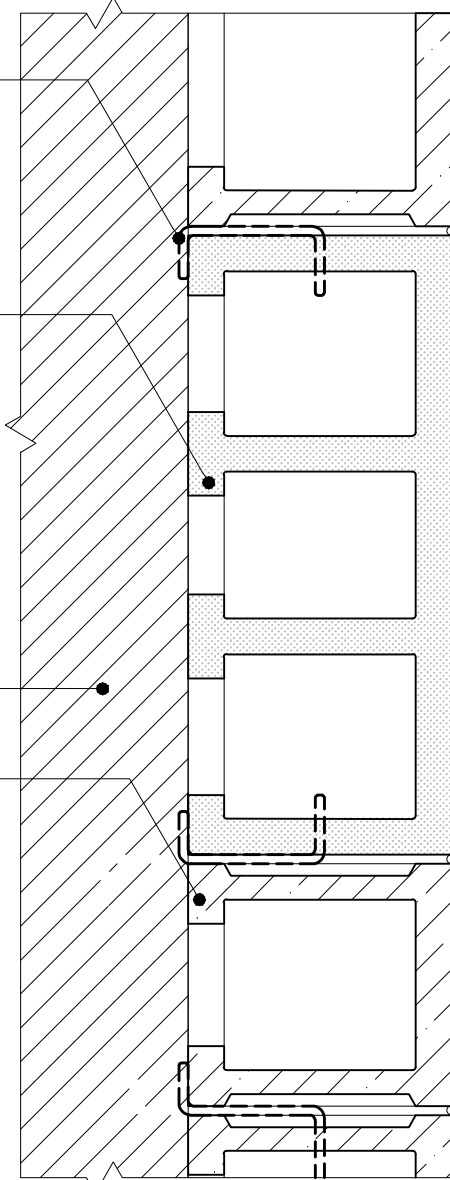
T2 / A528

INDIVIDUAL SMALL UNIT REPLACEMENT APPLIES TO ALL SIMILAR CONDITIONS

- CAREFULLY REMOVE EXISTING DAMAGED TERRA COTTA UNITS (VERIFY IN FIELD); USE HAND TOOLS ONLY. REPLACE W/NEW
- 040130 **TERRA COTTA** MATCHING EXISTING T.C. CONFIGURATION, TYPE, FINISH, COLOR AND ANCHORING SYSTEM (TYP.)
- 040513 **MORTAR: ASTM C 270 TYPE N**; TOOLING TO MATCH EXISTING.

SHORE AND PROTECT EXISTING BRICK MASONRY TO REMAIN

SHORE AND PROTECT EXISTING TERRA COTTA TO REMAIN



SECTION
0 6" 1' 2'
SCALE: 1 1/2" = 1'-0"

TRC 11

TERRA COTTA UNIT REPLACEMENT AT WINDOW JAMB (EA)

EXISTING BACK-UP MASONRY; VERIFY CONDITION.

PROTECT EXISTING WINDOW TO REMAIN

JNT 01

SEALANT JOINT REPLACEMENT AT WINDOW PERIMETER

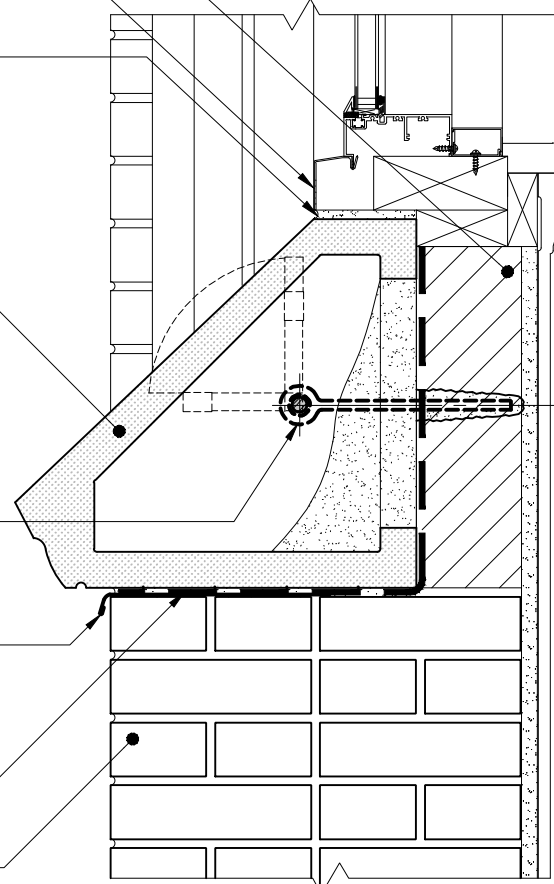
- CAREFULLY REMOVE EXISTING DAMAGED TERRA COTTA UNITS (VERIFY IN FIELD); USE HAND TOOLS ONLY. REPLACE W/NEW
- 040130 **TERRA COTTA** MATCHING EXISTING T.C. CONFIGURATION, TYPE, FINISH, COLOR AND ANCHORING SYSTEM (TYP.)
- 040513 **MORTAR: ASTM C 270 TYPE N**; TOOLING TO MATCH EXISTING.

T4 / A528

INDIVIDUAL PROJECTING UNIT REPLACEMENT APPLIES TO ALL SIMILAR CONDITIONS

- 076200 **PRE-FORMED SHEET METAL FLASHING**, (LEAD COATED COPPER) WITH END DAM FLASHING AND 1/4" DRIP SET IN FLASHING CEMENT.
- 076200 **MODIFIED BITUMEN FABRIC FLASHING** (SELF-ADHERING) TO SEAL PENETRATIONS.

SHORE AND PROTECT EXISTING BRICK MASONRY TO REMAIN



SECTION
0 6" 1' 2'
SCALE: 1 1/2" = 1'-0"

TRC 12

TERRA COTTA UNIT REPLACEMENT AT WINDOW SILL (EA)

LEGEND

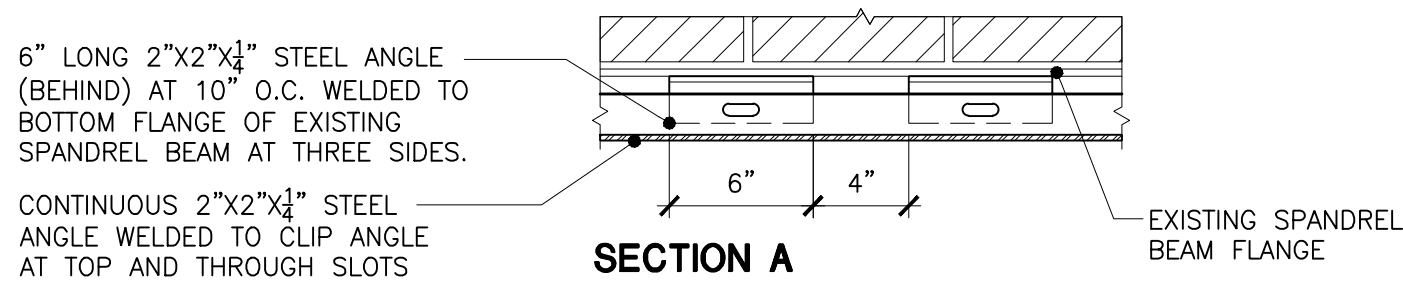
- EXISTING BRICK MASONRY
- EXISTING TERRA COTTA UNITS
- NEW TERRA COTTA UNITS

LIQUID APPLIED FLASHING NOTES: (APPLY TO ALL DETAILS ON THIS PAGE)

1. PREPARE AND APPLY **LIQUID MEMBRANE PRIMER** TO ALL SURFACES IN CONTACT WITH RESIN.
- 075600
2. PREPARE LEVEL AND PATCH SUBSTRATE AS REQUIRED WITH APPROVED BY MANUFACTURER **PATCHING COMPOUND** PRIOR TO APPLICATION OF PRIMER AND MEMBRANE FLASHING ON VERTICAL SURFACES.
- 075600

NOTES: (APPLY TO ALL DETAILS ON THIS PAGE)

1. T.C. PROFILES AND ANCHORING ARE SHOWN SCHEMATICALLY. VERIFY IN FIELD.
2. EXPOSED WALL FACES MUST HAVE A MIN. 1" THICKNESS.
3. SETTING BEDS MUST HAVE A MIN. 4" DEPTH.
4. PROVIDE PROJECTING PIECES WITH DRIPS.
5. FLASHINGS AND SHEET METAL SHALL BE EMBEDDED IN T.C. JOINTS A MIN. OF 3/4" OR HAVE REGLETS FORMED IN T.C. PIECES.



SHORE AND PROTECT EXISTING TERRA COTTA TO REMAIN

PREPARE EXISTING STEEL BAR TO REMAIN AND COAT WITH

099713 **COATING TYPE: 2ER**

JNT 02

SEALANT JOINT REPLACEMENT

- CAREFULLY REMOVE EXISTING DAMAGED TERRA COTTA UNITS; USE HAND TOOLS ONLY. REPLACE W/NEW
- 040130 **TERRA COTTA** MATCHING EXISTING T.C. CONFIGURATION, TYPE, FINISH, COLOR AND ANCHORING SYSTEM (TYP.)
- 040513 **MORTAR: ASTM C 270 TYPE N**; TOOLING TO MATCH EXISTING.

- PROVIDE S.S. 1" SHAPE **ANCHOR** SECURELY WELDED TO EXISTING STEEL BAR AT EVERY T.C. UNIT JOINT
- 040519

- NEW BRICK INFILL
- 040120 **BRICK: ASTM C216, GRADE SW**. MATCH EXISTING COLOR, SIZE AND BOND PATTERN
- 040513 **MORTAR: ASTM C 270 TYPE N**; TOOLING TO MATCH EXISTING.

076200 LIQUID APPLIED FLASHING

- PROVIDE 6" LONG 2"x2"x1/4" **STEEL ANGLE** AT 10" O.C. WELDED TO BOTTOM FLANGE OF EXISTING SPANDREL BEAM AT THREE SIDES.
- 051200

- PROVIDE CONTINUOUS 2"x2"x1/4" **STEEL ANGLE** AT WELDED TO CLIP ANGLE AT TOP AND THROUGH SLOTS
- 051200

NOTE: PROVIDE STEEL LINTEL SHOP DRAWINGS SIGNED AND SEALED BY ENGINEER LICENSED IN NEW YORK STATE

PROTECT EXISTING WINDOW & FRAME TO REMAIN

SHORE AND PROTECT EXISTING TERRA COTTA TO REMAIN

SECTION
0 6" 1' 2'
SCALE: 1 1/2" = 1'-0"

TRC 14

TERRA COTTA REPLACEMENT AT 5TH FLOOR WINDOW LINTEL (LF)

SHORE AND PROTECT EXISTING MAISONRY TO REMAIN

PREPARE EXISTING STEEL BAR TO REMAIN AND COAT WITH

099713 **COATING TYPE: 2ER**

- 024119 CAREFULLY REMOVE EXISTING BRICK MASONRY AS REQUIRED TO REMOVE TERRA COTTA UNIT; REPLACE W/
- 040120 **BRICK: ASTM C216, GRADE SW**. MATCH EXISTING COLOR, SIZE AND BOND PATTERN
- 040513 **MORTAR: ASTM C 270 TYPE N**; TOOLING TO MATCH EXISTING.

JNT 02

SEALANT JOINT REPLACEMENT

- CAREFULLY REMOVE EXISTING DAMAGED TERRA COTTA UNITS USING HAND TOOLS ONLY. REPLACE W/NEW
- 040130 **TERRA COTTA** MATCHING EXISTING T.C. CONFIGURATION, TYPE, FINISH, COLOR AND ANCHORING SYSTEM (TYP.)
- 040513 **MORTAR: ASTM C 270 TYPE N**; TOOLING TO MATCH EXISTING.

PROTECT EXISTING BRICK INFILL TO REMAIN

JNT 01

SEALANT JOINT REPLACEMENT AT WINDOW PERIMETER

- PREPARE EXISTING 'Z' SHAPE STEEL ANGLE TO REMAIN AND COAT WITH
- 099713 **COATING TYPE: 2ER**

PROTECT EXISTING WINDOW & FRAME TO REMAIN

SHORE AND PROTECT EXISTING TERRA COTTA TO REMAIN

PREPARE EXISTING SPANDREL TO REMAIN AND COAT WITH

099713 **COATING TYPE: 2ER**

T.C. UNIT STEEL FRAME 3" "I" PROFILE, WELDED TO STEEL BEAM (V.I.F.)

NOTE: PROVIDE STEEL FRAME SHOP DRAWINGS SIGNED AND SEALED BY ENGINEER LICENSED IN NEW YORK STATE. DRAWINGS SHALL INCLUDE STEEL PROFILES, CALCULATIONS, DIMENSIONS, ATTACHMENT DETAILS, ETC.

SECTION

BASE BID /

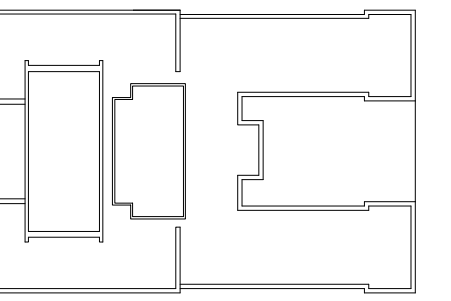
TRC 13 - UNIT PRICE ITEM

TERRA COTTA REPLACEMENT AT WINDOW LINTEL (LF)

0 6" 1' 2'
SCALE: 1 1/2" = 1'-0"

SUPER STRUCTURES
+ ENGINEERS
ARCHITECTS

32 AVE OF THE AMERICAS
NEW YORK, NY 10013
TEL 212 505 1193
FAX 212 505 1728



RESTORATION
ASSEMBLY DETAILS:
TRC 11, TRC 12,
TRC 13, TRC 14

Drawn By: Checked By: Date:

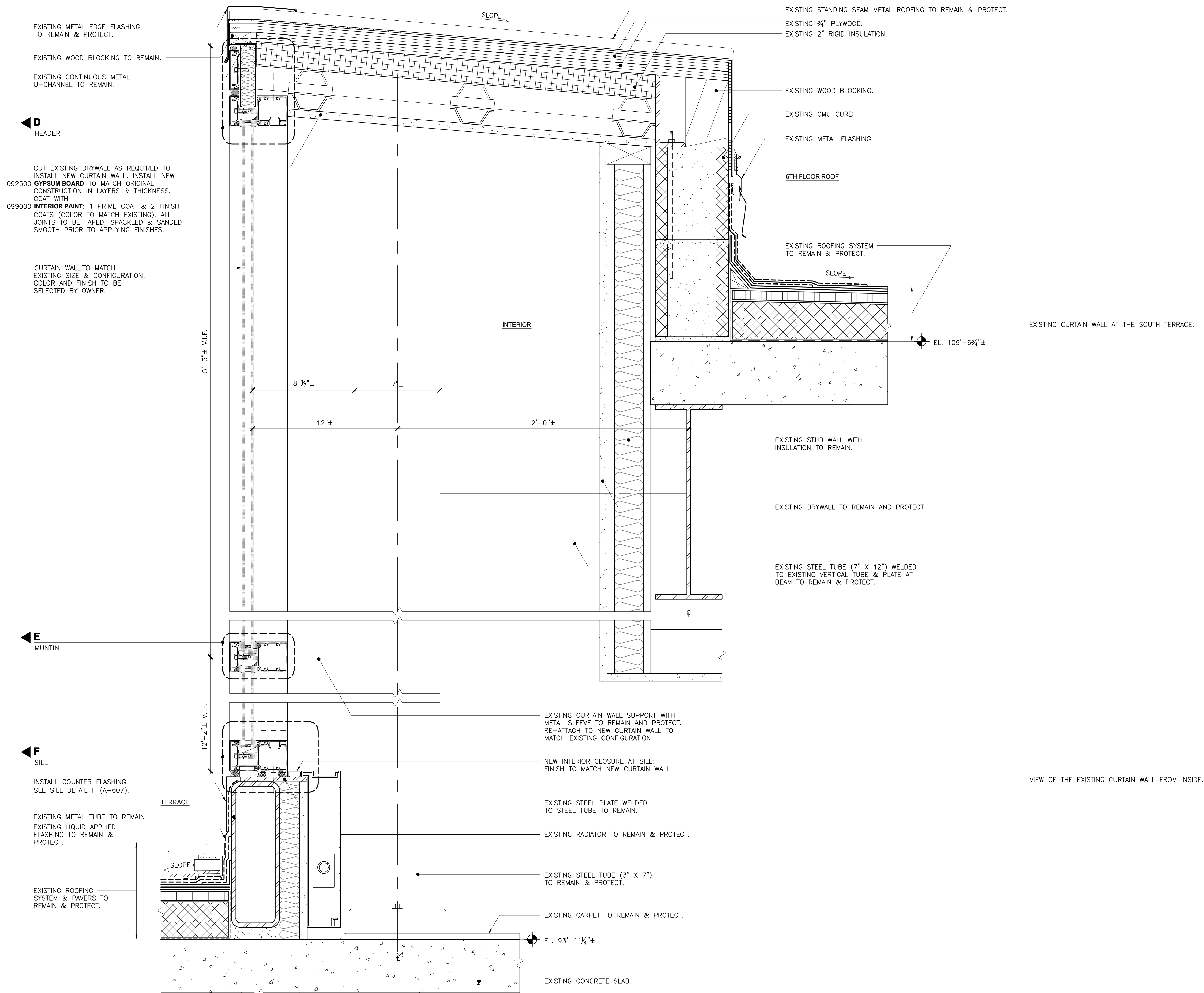
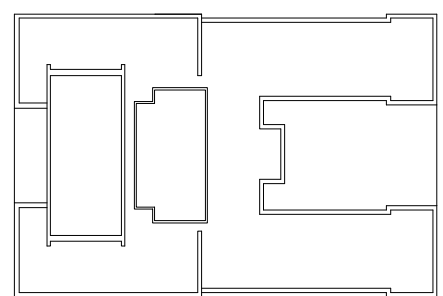
Seal & Signature

DASNY Project No:

Drawing Number

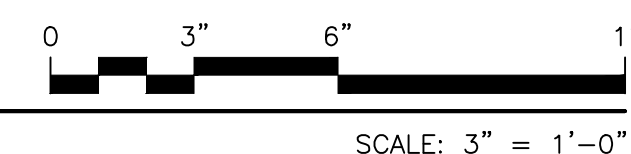
A526.00

Drawing 47 of 52



SECTION B-B

CWS 01 (CONT.) CURTAIN WALL AT TERRACE (EA)



RESTORATION ASSEMBLY DETAILS: CWS 01 (CONT.)

Drawn By:	Checked By:	Date:
Seal & Signature	DASNY Project No:	
Drawing Number		A606.00
Drawing 58 of 52		

GABLE 01 TERRA COTTA SCHEDULE		
UNIT REFERENCE NO.	QUANTITIES	UNIT DESCRIPTION
G01	1	GABLE UNIT
G02	2	GABLE UNIT
G03	8	GABLE UNIT
G04	2	GABLE UNIT
G05	1	GABLE UNIT
G06	1	GABLE UNIT
G07	1	GABLE UNIT
G08	2	GABLE UNIT
G09	2	GABLE UNIT
G10	2	GABLE UNIT
G11	2	GABLE UNIT
G12	1	GABLE UNIT
G13	2	GABLE UNIT
G14	2	GABLE UNIT
G15	2	GABLE UNIT
G16	2	GABLE UNIT
G17	2	GABLE UNIT
G18	2	GABLE UNIT
G19	2	GABLE UNIT
G20	2	GABLE UNIT
G21	4	GABLE UNIT
G22	4	GABLE UNIT
G23	4	GABLE UNIT
G24	2	GABLE UNIT
G25	2	GABLE UNIT
G26	2	GABLE UNIT
G27	2	GABLE UNIT
G28	2	GABLE UNIT
G29	2	GABLE UNIT
G30	2	GABLE UNIT
G31	4	GABLE UNIT
G32	4	GABLE UNIT
G33	4	GABLE UNIT
G34	2	GABLE UNIT
G35	2	GABLE UNIT
G36	2	GABLE UNIT
G37	2	GABLE UNIT
G38	2	GABLE UNIT

*EXISTING TERRA COTTA UNIT INVENTORY FOR REFERENCE ONLY. CONFIGURATIONS, TYPES & QUANTITIES TO BE VERIFIED.

G39	2	GABLE UNIT
G40	6	GABLE UNIT
G41	4	GABLE UNIT
G42	4	GABLE UNIT
G43	4	GABLE UNIT
G44	2	GABLE UNIT
G45	2	GABLE UNIT
G46	2	GABLE UNIT
G47	2	GABLE UNIT
G48	2	GABLE UNIT
	119	
N01	1	BLIND NICHE
N02	2	BLIND NICHE
N03	2	BLIND NICHE
N04	2	BLIND NICHE
N05	2	BLIND NICHE
N06	2	BLIND NICHE
N07	2	BLIND NICHE
N08	2	BLIND NICHE
N09	2	BLIND NICHE
N10	2	BLIND NICHE
N11	1	BLIND NICHE
N12	1	BLIND NICHE
N13	1	BLIND NICHE
	22	
V01	1	VOUSSOIR
V02	1	VOUSSOIR
V03	1	VOUSSOIR
V04	1	VOUSSOIR
V05	1	VOUSSOIR
V06	1	VOUSSOIR
V07	1	VOUSSOIR
V08	1	VOUSSOIR
V09	1	VOUSSOIR
V10	1	VOUSSOIR
V11	1	VOUSSOIR
V12	1	VOUSSOIR
V13	1	VOUSSOIR
V14	1	VOUSSOIR
V15	1	VOUSSOIR

V16	1	VOUSSOIR
V17	1	VOUSSOIR
V18	4	VOUSSOIR
V19	2	VOUSSOIR
V20	2	VOUSSOIR
V21	4	VOUSSOIR
V22	2	VOUSSOIR
V23	2	VOUSSOIR
V24	1	VOUSSOIR
V25	1	VOUSSOIR
V26	1	VOUSSOIR
V27	1	VOUSSOIR
V28	1	VOUSSOIR
V29	1	VOUSSOIR
V30	1	VOUSSOIR
V31	1	VOUSSOIR
V32	1	VOUSSOIR
V33	1	VOUSSOIR
V34	1	VOUSSOIR
V35	1	VOUSSOIR
V36	1	VOUSSOIR
V37	1	VOUSSOIR
V41	1	VOUSSOIR
V42	1	VOUSSOIR
V43	1	VOUSSOIR
V44	1	VOUSSOIR
V45	1	VOUSSOIR
V46	1	VOUSSOIR
V47	1	VOUSSOIR
V48	1	VOUSSOIR
V49	1	VOUSSOIR
V50	1	VOUSSOIR
V51	1	VOUSSOIR
V52	1	VOUSSOIR
V53	1	VOUSSOIR
V54	1	VOUSSOIR
V55	1	VOUSSOIR
V56	1	VOUSSOIR
V57	1	VOUSSOIR
V58	1	VOUSSOIR

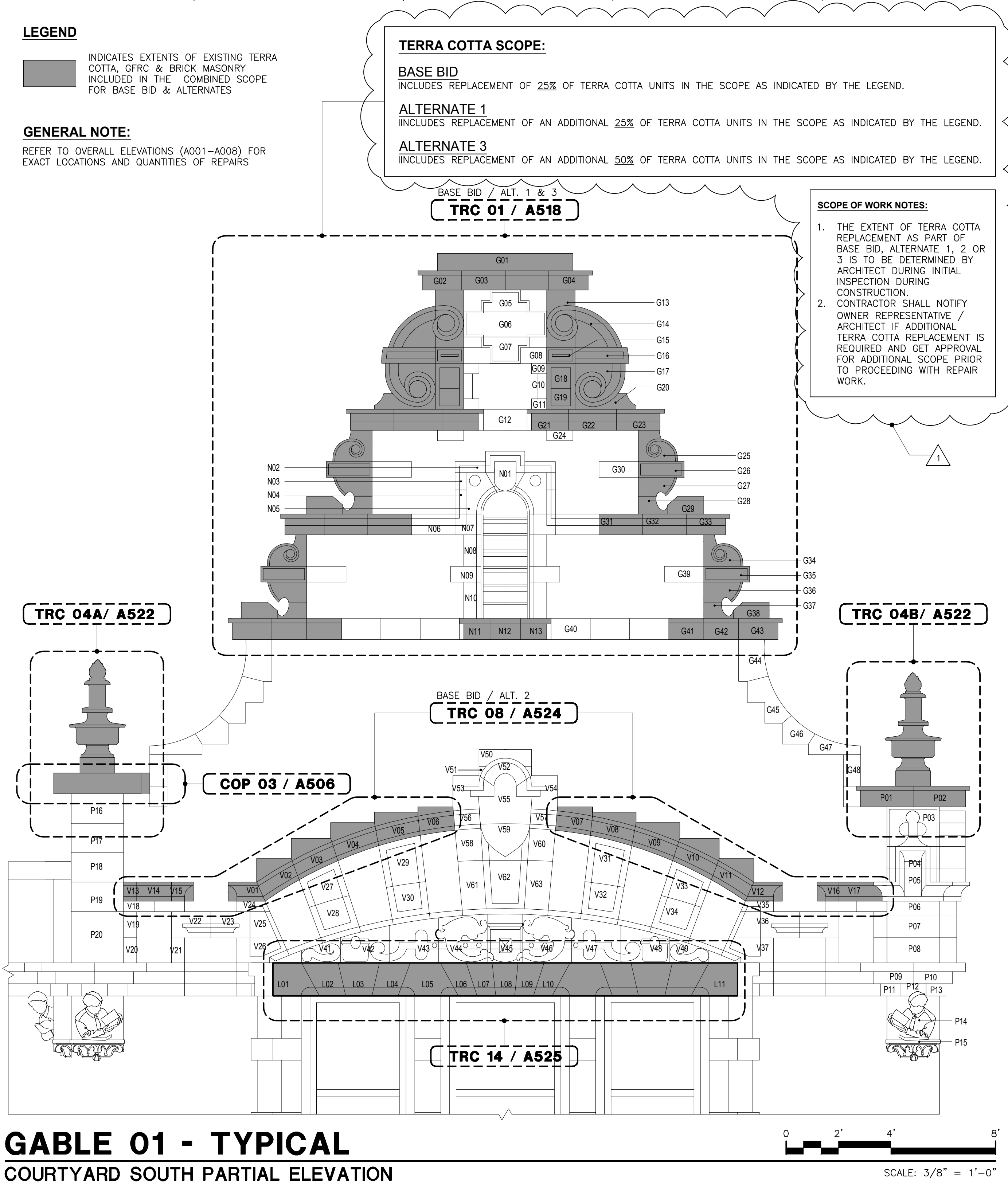
V59	1	VOUSSOIR
V60	1	VOUSSOIR
V61	1	VOUSSOIR
V62	1	VOUSSOIR
V63	1	VOUSSOIR
	107	
P01	2	PIER
P02	2	PIER
P03	2	PIER
P04	2	PIER
P05	2	PIER
P06	2	PIER
P07	2	PIER
P08	2	PIER
P09	8	PIER
P10	8	PIER
P11	12	PIER
P12	12	PIER
P13	12	PIER
P14	3	PIER
P15	3	PIER
P16	2	PIER
P17	2	PIER
P18	2	PIER
P19	2	PIER
P20	2	PIER
	84	
L01	1	LINTEL
L02	2	LINTEL
L03	2	LINTEL
L04	2	LINTEL
L05	2	LINTEL
L06	1	LINTEL
L07	1	LINTEL
L08	1	LINTEL
L09	1	LINTEL
L10	1	LINTEL
L11	1	LINTEL
	15	
F01	2	FINIAL

LEGEND

INDICATES EXTENTS OF EXISTING TERRA COTTA, OFRC & BRICK MASONRY INCLUDED IN THE COMBINED SCOPE FOR BASE BID & ALTERNATES

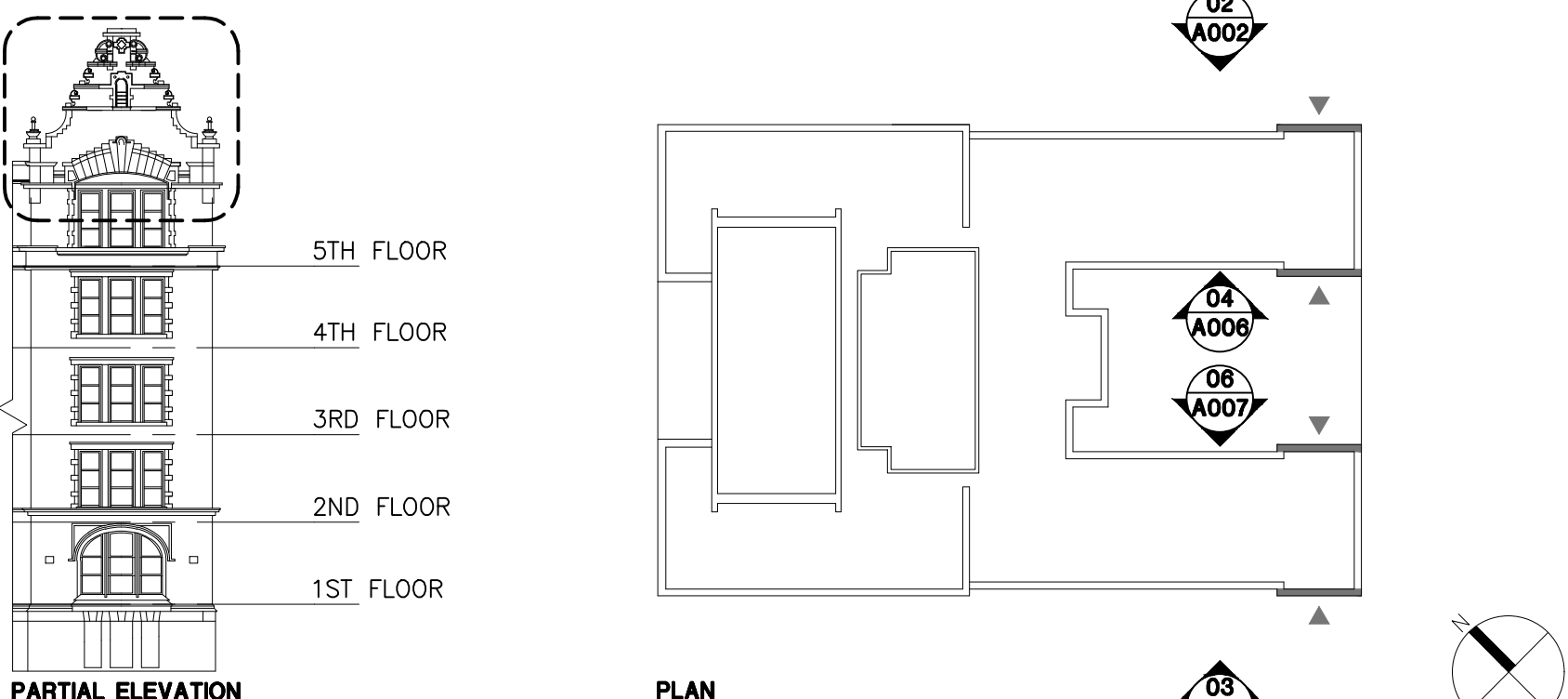
GENERAL NOTE:

REFER TO OVERALL ELEVATIONS (A001-A008) FOR EXACT LOCATIONS AND QUANTITIES OF REPAIRS



GABLE 01 PHOTOGRAPHS

NTS





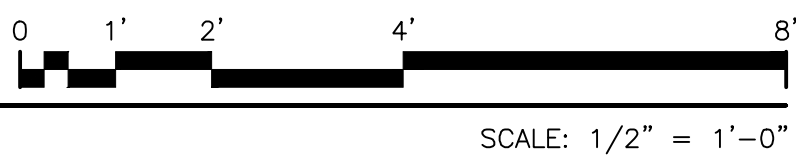
WATER TABLE 01A PHOTOGRAPHS

WATER TABLE 01A TERRA COTTA SCHEDULE

UNIT REFERENCE NO.	QUANTITIES TABLE 02 (X2)	QUANTITIES TABLE 03 (X8)	QUANTITIES TABLE 06 (X8)	UNIT DESCRIPTION
WT01	5 (X2)	20 (X2)	29 (X2)	WATER TABLE UNIT
WT02	4 (X4)	20 (X2)	29 (X2)	WATER TABLE UNIT
WT03	4 (X4)	20 (X2)	29 (X2)	WATER TABLE UNIT
WT04	4 (X4)	20 (X2)	29 (X2)	WATER TABLE UNIT
WT05	11 (X4)	50 (X2)	76 (X2)	WATER TABLE UNIT
WT06	12 (X4)	20 (X2)	87 (X2)	WATER TABLE UNIT
WT07	5 (X4)	20 (X2)	29 (X2)	WATER TABLE UNIT
WT08	4 (X4)	40 (X2)	58 (X2)	WATER TABLE UNIT
TOTAL	372	2,520	5,856	

*EXISTING TERRA COTTA UNIT INVENTORY FOR REFERENCE ONLY.
CONFIGURATIONS, TYPES & QUANTITIES TO BE VERIFIED.

WATER TABLE 01A



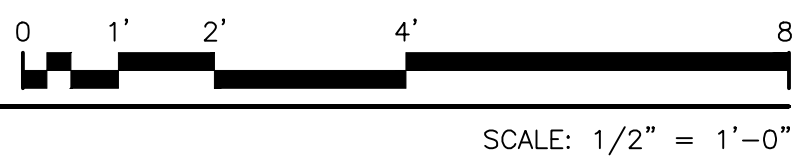
WATER TABLE 01B PHOTOGRAPHS

WATER TABLE 01B TERRA COTTA SCHEDULE

UNIT REFERENCE NO.	QUANTITIES TABLE 04(X4)	UNIT DESCRIPTION
WT01	14 (X2)	WATER TABLE UNIT
WT02	15 (X2)	WATER TABLE UNIT
WT03	15 (X2)	WATER TABLE UNIT
WT04	21 (X2)	WATER TABLE UNIT
WT05	45 (X2)	WATER TABLE UNIT
WT06	14 (X2)	WATER TABLE UNIT
WT07	15 (X2)	WATER TABLE UNIT
TOTAL	1,112	

*EXISTING TERRA COTTA UNIT INVENTORY FOR REFERENCE ONLY.
CONFIGURATIONS, TYPES & QUANTITIES TO BE VERIFIED.

WATER TABLE 01B



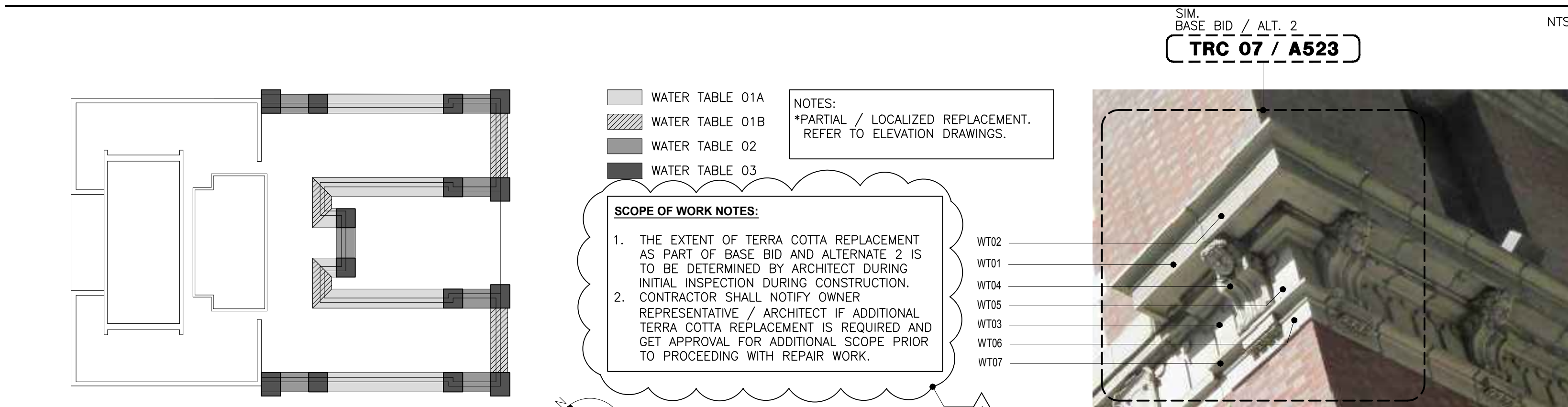
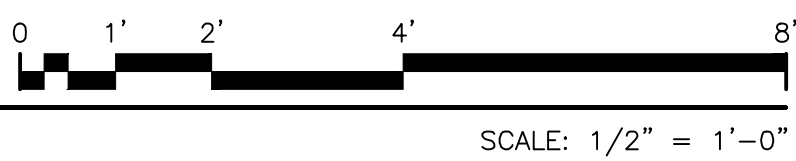
WATER TABLE 02 PHOTOGRAPHS

WATER TABLE 02 TERRA COTTA SCHEDULE

UNIT REFERENCE NO.	QUANTITIES TABLE 01 (X4)	QUANTITIES TABLE 05 (X2)	QUANTITIES TABLE 09 (X2)	UNIT DESCRIPTION
WT01	7 (X4)	9	7 (X4)	WATER TABLE UNIT
WT02	6 (X4)	8	6 (X4)	WATER TABLE UNIT
WT03	6 (X4)	8	6 (X4)	WATER TABLE UNIT
WT04	16 (X4)	21	16 (X4)	WATER TABLE UNIT
WT05	20 (X4)	24	20 (X4)	WATER TABLE UNIT
WT06	15 (X4)	19	15 (X4)	WATER TABLE UNIT
WT07	2 (X4)	2	2 (X4)	WATER TABLE UNIT
TOTAL	1,152	91	576	

*EXISTING TERRA COTTA UNIT INVENTORY FOR REFERENCE ONLY.
CONFIGURATIONS, TYPES & QUANTITIES TO BE VERIFIED.

WATER TABLE 02



KEY PLAN

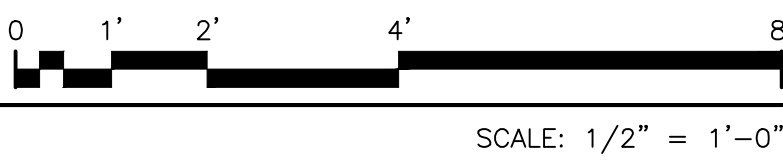
WATER TABLE 03 PHOTOGRAPH

WATER TABLE 03 TERRA COTTA SCHEDULE

UNIT REFERENCE NO.	QUANTITIES	UNIT DESCRIPTION
WT01	1	WATER TABLE UNIT
WT02	1	WATER TABLE UNIT
WT03	1	WATER TABLE UNIT
WT04	1	WATER TABLE UNIT
WT05	1	WATER TABLE UNIT
WT06	1	WATER TABLE UNIT
WT07	1	WATER TABLE UNIT
TOTAL	7	

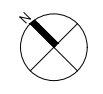
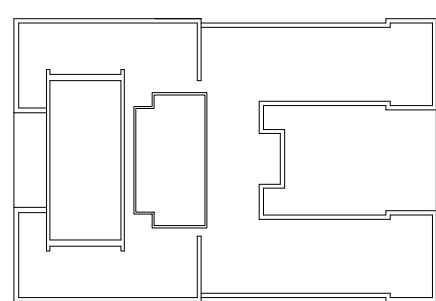
*EXISTING TERRA COTTA UNIT INVENTORY FOR REFERENCE ONLY. CONFIGURATIONS, TYPES & QUANTITIES TO BE VERIFIED.

WATER TABLE 03



SUPER STRUCTURES
+
ENGINEERS
ARCHITECTS

32 AVE OF THE AMERICAS
NEW YORK, NY 10013
TEL 212 505 1183
FAX 212 505 1728



**WATER TABLE 01A,
01B, 02, 03**

Drawn By: _____ Checked By: _____ Date: _____

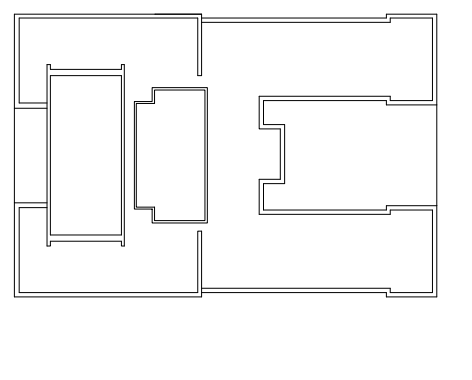
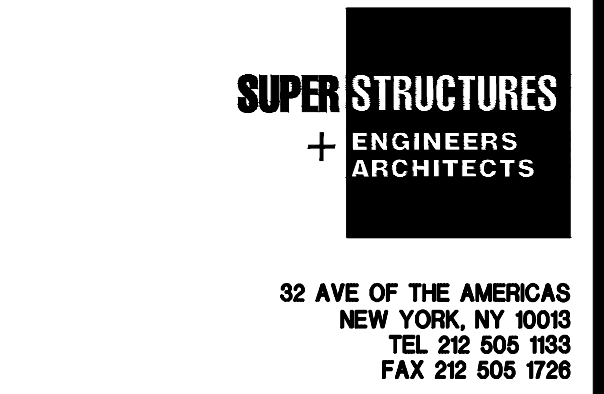
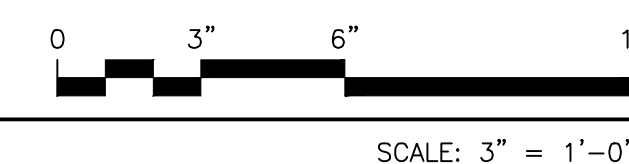
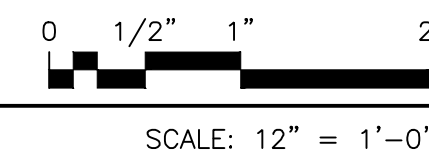
Seal & Signature _____ DASNY Project No: _____

Drawing Number
A109.00

Drawing 22 of 52

JOINT WIDTH	1/4"	3/8"	1/2"	5/8"	3/4"	7/8"	1"	1 1/4"	1 1/2"
SEALANT DEPTH	1/4"	1/4"	1/4"	1/4"-3/8"	3/8"-1/2"	3/8"-1/2"	3/8"-1/2"	1/2"	1/2"
BACKER ROD DIAMETER	3/8"	1/2"	5/8"	3/4"	1"	1 1/4"	1 1/4"	1 1/2"	2"

1. DRAWING IS NOTATIONAL, CONTRACTOR SHALL VERIFY PROFILES, SHAPES & SIZES IN FIELD.
2. CONTRACTOR IS TO PROVIDE SHOP DRAWINGS FOR CAST STONE COPING FABRICATION FOR ARCHITECT'S REVIEW AND APPROVAL. SHOP DRAWINGS MUST SHOW DETAILS OF CONSTRUCTION, PROFILES OF PIECES, DIMENSIONS, JOINTS, DRIP EDGES, FLASHINGS, SHEET METAL, REGLETS, ANCHORS, CONNECTIONS AND INSTALLATION DETAILS.
3. CONTRACTOR MAY NEED TO REMOVE CAREFULLY THE EXISTING FENCE/SCREEN, AT THE INSIDE FACE OF THE PARAPETS TO PERFECT COPING WORK. CONTRACTOR TO ARRANGE STORAGE WITH CLIENT & REINSTALL FENCE/SCREEN TO MATCH THE EXISTING ONCE COPING WORK IS COMPLETE.
4. THE COPING PLAN/CONFIGURATION AND FENCE/SCREEN ATTACHMENT MAY VARY AT NORTH/SOUTH PARAPETS AND THE EAST PARAPET.



RESTORATION ASSEMBLY DETAILS: COP 01

Drawn By: | Checked By: | Date:

Seal & Signature	DASNY Project No:
------------------	-------------------

Drawing Number

A504.00

Drawing 26 of 52