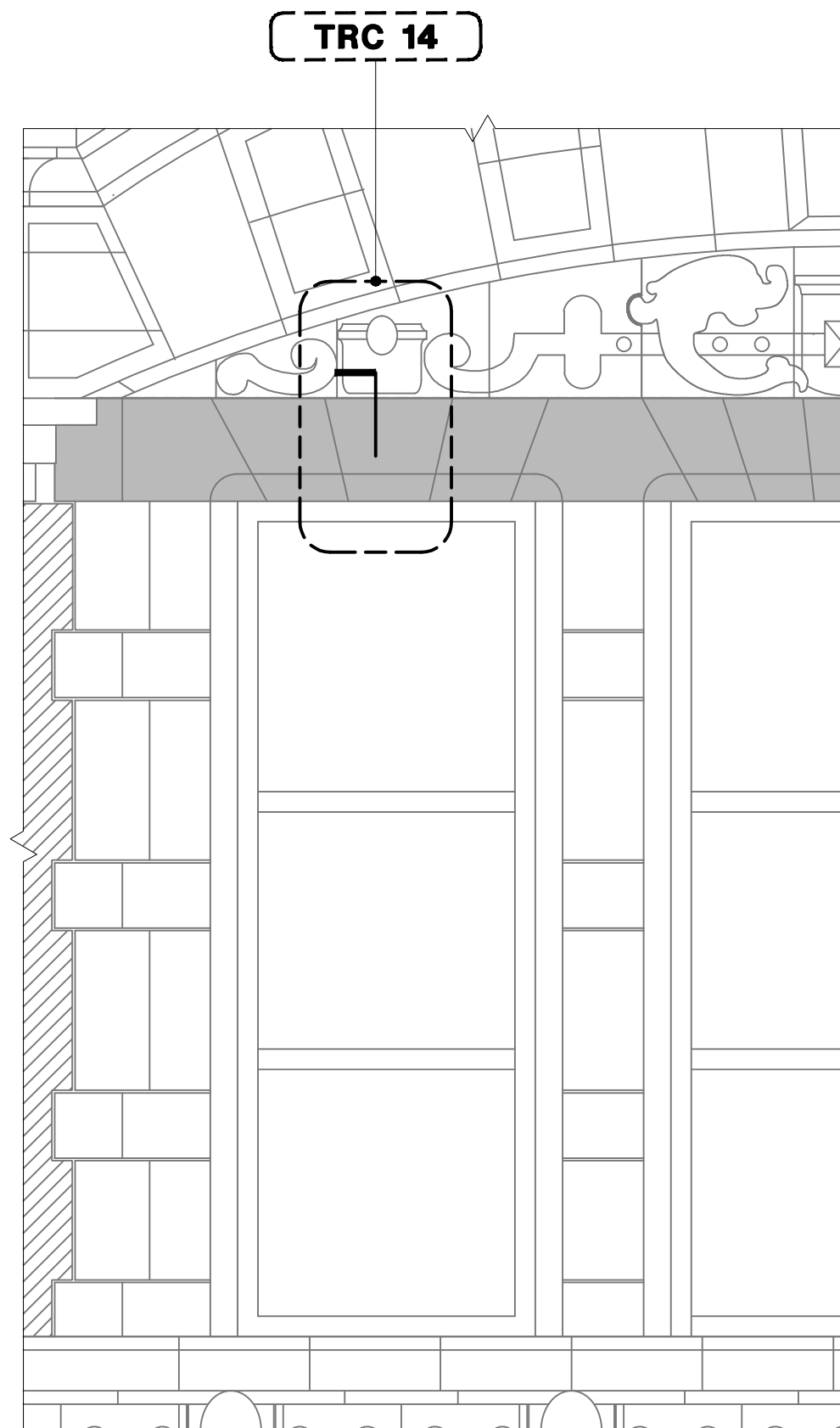


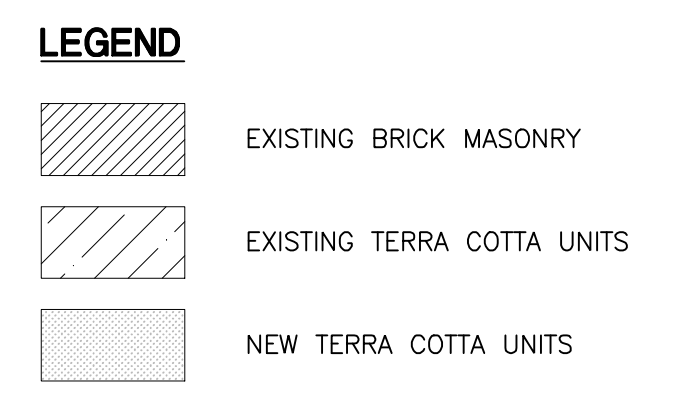
**TYPICAL WINDOW ELEVATION BELOW 5TH FLOOR**  
 - REFER TO ELEVATIONS FOR LOCATIONS OF UNITS TO BE REPLACED  
 - REPRESENTS HALF OF THE WINDOW



**TYPICAL WINDOW ELEVATION ABOVE 5TH FLOOR**  
 - REFER TO ELEVATIONS FOR LOCATIONS OF UNITS TO BE REPLACED  
 - REPRESENTS HALF OF THE WINDOW

**GENERAL TERRA COTTA NOTES:** (APPLY TO ALL DETAILS ON THIS PAGE)

- CONDUCT SITE SURVEY OF EXISTING TERRA COTTA ELEMENTS PRIOR TO SUBMITTAL OF SHOP DRAWINGS AND FABRICATION OF TERRA COTTA UNITS.
- IDENTIFY AND CODE TERRA COTTA UNITS TO BE REPLACED.
- ACTUAL TYPES AND NUMBERS OF TERRA COTTA UNITS TO BE VERIFIED.
- PROVIDE PHYSICAL SAMPLES, COLLECT MEASUREMENTS, TAKE PHOTOGRAPHS, MAKE FIELD SKETCHES AND RECORD OTHER DATA AS REQUIRED FOR DESIGN AND FABRICATION OF REPLACEMENT TERRA COTTA UNITS.
- CAREFULLY REMOVE EXISTING UNITS, SALVAGE AND RESET UNITS IF NOT DAMAGED AND AS APPROVED/DIRECTED BY ARCHITECT.
- SAMPLE AND DETERMINE COMPRESSIVE STRENGTH OF EXISTING MORTAR. IDENTIFY JOINTS TO BE REPOINTED.
- ILLUSTRATIVE SAMPLES:
  - CAREFULLY REMOVE EXISTING TERRA COTTA UNITS REQUIRED AS SAMPLES TO USE IN PREPARATION OF MOLDS FOR FABRICATION OF REPLACEMENT PIECES.
  - PACK, CRATE AND DELIVER SAMPLES TO MANUFACTURER'S PLANT. SAMPLES SHALL BE RETAINED BY THE MANUFACTURER.
  - PROVIDE SHORING AND TEMPORARY PROTECTION TO PREVENT MOISTURE PENETRATION INTO STRUCTURE WHERE TERRA COTTA UNITS ARE REMOVED.
- PROVIDE SHOP DRAWINGS SHOWING:
  - ELEVATIONS, SECTIONS AND DETAILS OF ORNAMENTATION OF EXISTING TERRA COTTA/GRG TO BE REPLACED AND ADJACENT MATERIALS. DRAWINGS SHOULD INCLUDE CONSTRUCTION OF TERRA COTTA AND ITS RELATIONSHIP TO ADJACENT MATERIALS, PROFILES OF PIECES, DIMENSIONS, JOINT WIDTHS AND BUILT-IN WEEPS AND DRIP EDGES. DRAWINGS SHALL BE 1:8 MIN. SCALE. SHOP DRAWINGS SHALL ALSO INCLUDE RELIEVING ANGLES, VENTS, WEEPS, EXPANSION JOINTS. INDICATE LOCATION AND TYPE OF FLASHINGS TO BE USED.
  - SHOP DRAWINGS SHALL ALSO INCLUDE ANCHORAGE AND GROUTING DESIGNED BY A NYS LICENSED ENGINEER AND COORDINATED WITH TERRA COTTA MANUFACTURER'S REQUIREMENTS. ANCHORAGE DRAWINGS AND CALCULATIONS SHALL BE SUBMITTED AS ONE COMPLETE PACKAGE OF SHOP DRAWINGS.
  - SHOP DRAWINGS SHALL ALSO INCLUDE SETTING DRAWINGS SHOWING THE LAYOUT, NUMBERING AND JOINT SIZES OF TERRA COTTA UNITS.
  - ALL SHOP DRAWINGS, CALCULATIONS AND SETTING DRAWINGS SHALL BE SUBMITTED AS ONE PACKAGE TO ARCHITECT FOR REVIEW. ALL PRODUCTS AND CALCULATIONS ARE TO BE COORDINATED WITH EACH MANUFACTURER'S REQUIREMENTS.



**LIQUID APPLIED FLASHING NOTES:** (APPLY TO ALL DETAILS ON THIS PAGE)

- PREPARE AND APPLY **LIQUID MEMBRANE PRIMER** TO ALL SURFACES IN CONTACT WITH RESIN.
- PREPARE LEVEL AND PATCH SUBSTRATE AS REQUIRED WITH APPROVED BY MANUFACTURER **PATCHING COMPOUND** PRIOR TO APPLICATION OF PRIMER AND MEMBRANE FLASHING ON VERTICAL SURFACES.

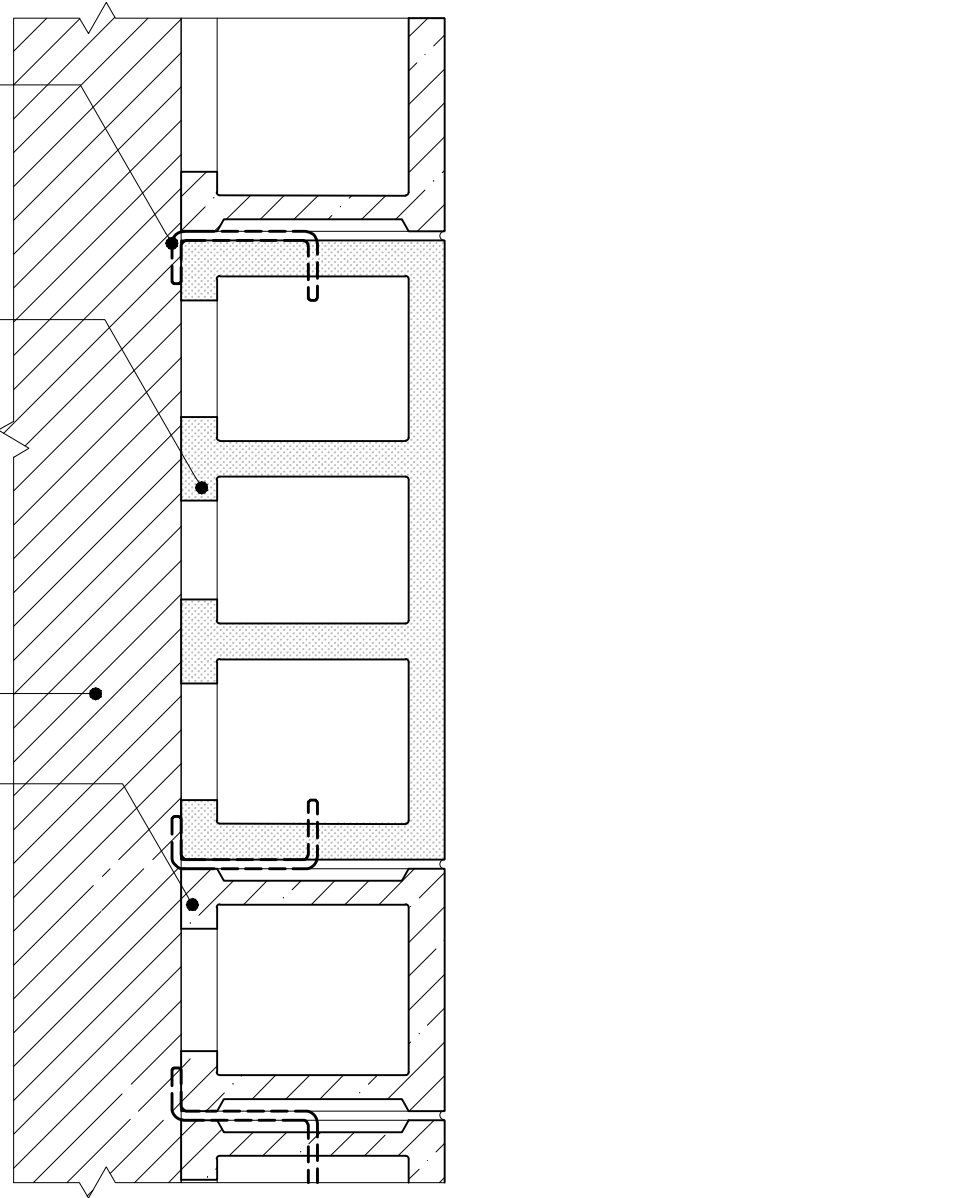
**NOTES:** (APPLY TO ALL DETAILS ON THIS PAGE)

- T.C. PROFILES AND ANCHORING ARE SHOWN SCHEMATICALLY. VERIFY IN FIELD.
- EXPOSED WALL FACES MUST HAVE A MIN. 1" THICKNESS.
- SETTING BEDS MUST HAVE A MIN. 4" DEPTH.
- PROVIDE PROJECTING PIECES WITH DRIPS.
- FLASHINGS AND SHEET METAL SHALL BE EMBEDDED IN T.C. JOINTS A MIN. OF 3/4" OR HAVE REGLETS FORMED IN T.C. PIECES.

**T2 / A528**  
 INDIVIDUAL SMALL UNIT REPLACEMENT APPLIES TO ALL SIMILAR CONDITIONS

- CAREFULLY REMOVE EXISTING DAMAGED TERRA COTTA UNITS (VERIFY IN FIELD); USE HAND TOOLS ONLY. REPLACE W/NEW
- 040130 **TERRA COTTA** MATCHING EXISTING T.C. CONFIGURATION, TYPE, FINISH, COLOR AND ANCHORING SYSTEM (TYP.)
- 040513 **MORTAR: ASTM C 270 TYPE N**; TOOLING TO MATCH EXISTING.

SHORE AND PROTECT EXISTING BRICK MASONRY TO REMAIN  
 SHORE AND PROTECT EXISTING TERRA COTTA TO REMAIN



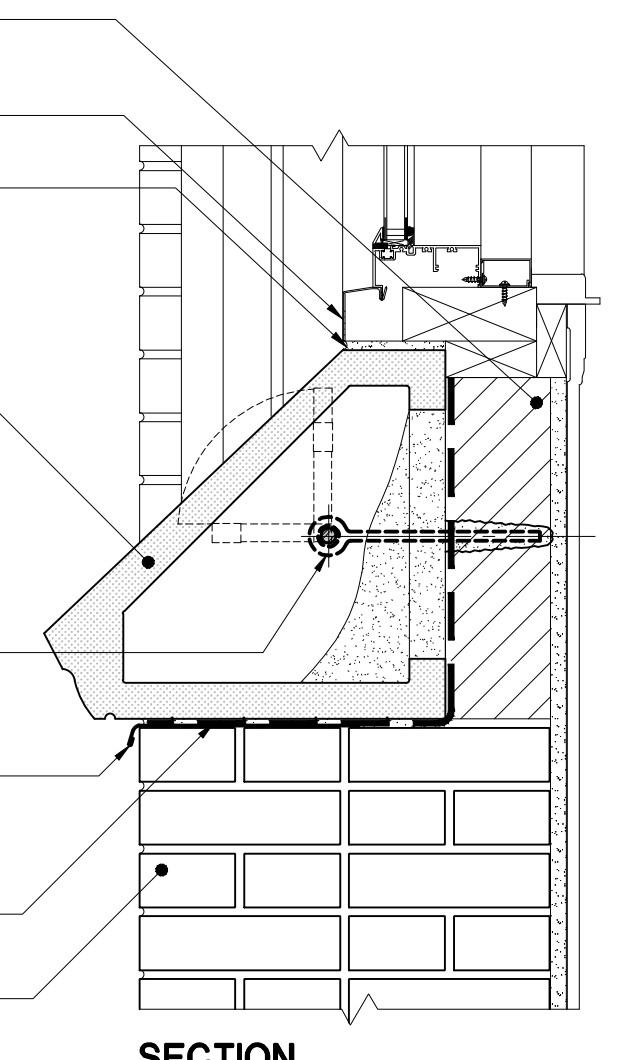
**TRC 11**  
**TERRA COTTA UNIT REPLACEMENT AT WINDOW JAMB (EA)**

**JNT 01**  
 SEALANT JOINT REPLACEMENT AT WINDOW PERIMETER

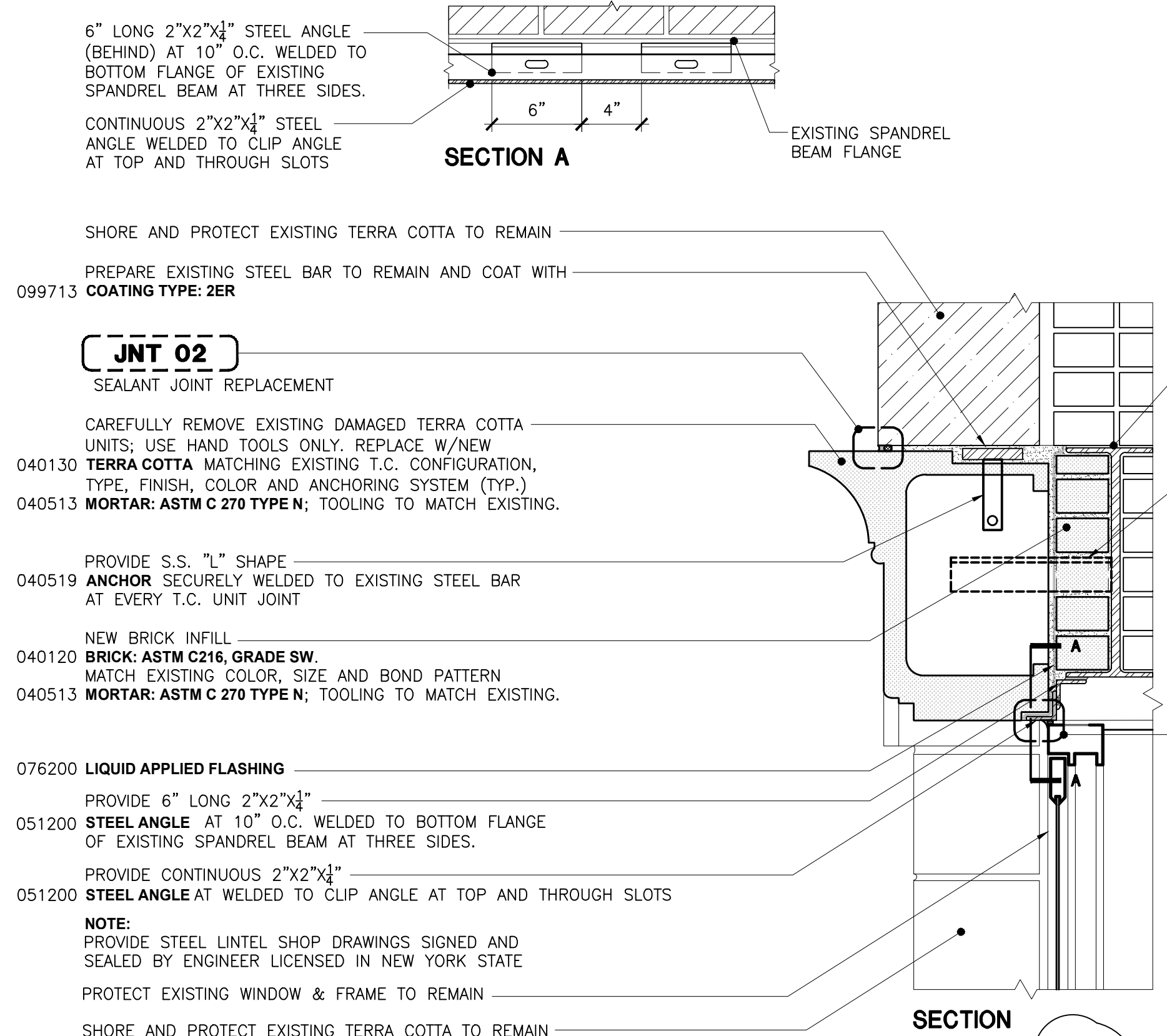
- CAREFULLY REMOVE EXISTING DAMAGED TERRA COTTA UNITS (VERIFY IN FIELD); USE HAND TOOLS ONLY. REPLACE W/NEW
- 040130 **TERRA COTTA** MATCHING EXISTING T.C. CONFIGURATION, TYPE, FINISH, COLOR AND ANCHORING SYSTEM (TYP.)
- 040513 **MORTAR: ASTM C 270 TYPE N**; TOOLING TO MATCH EXISTING.

**T4 / A528**  
 INDIVIDUAL PROJECTING UNIT REPLACEMENT APPLIES TO ALL SIMILAR CONDITIONS

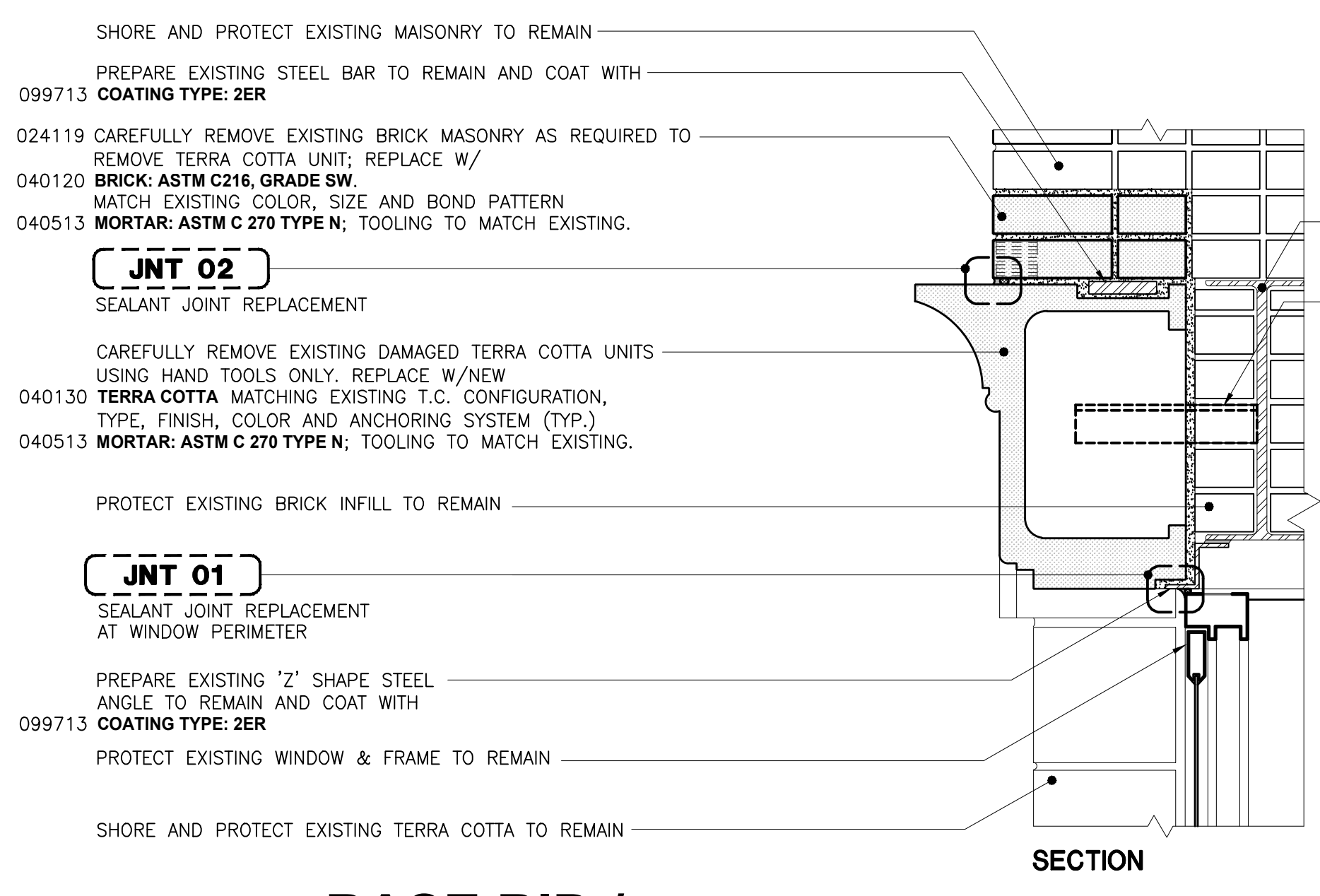
- 076200 **PRE-FORMED SHEET METAL FLASHING, (LEAD COATED COPPER)** WITH END DAM FLASHING AND 1/4" DRIP SET IN FLASHING CEMENT.
  - 076200 **MODIFIED BITUMEN FABRIC FLASHING (SELF-ADHERING)** TO SEAL PENETRATIONS.
- SHORE AND PROTECT EXISTING BRICK MASONRY TO REMAIN



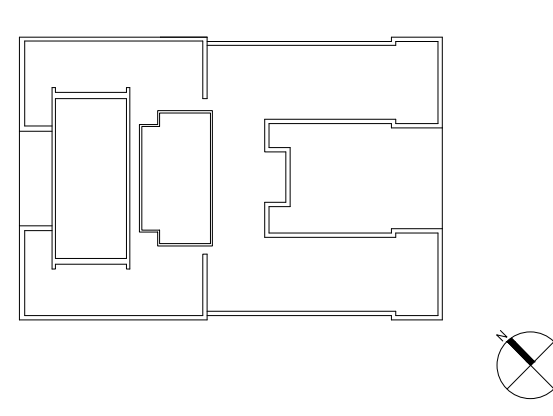
**TRC 12**  
**TERRA COTTA UNIT REPLACEMENT AT WINDOW SILL (EA)**



**TRC 14**  
**TERRA COTTA REPLACEMENT AT 5TH FLOOR WINDOW LINTEL (LF)**



**TRC 13 - UNIT PRICE ITEM**  
**TERRA COTTA REPLACEMENT AT WINDOW LINTEL (LF)**



**RESTORATION ASSEMBLY DETAILS:**  
 TRC 11, TRC 12,  
 TRC 13, TRC 14

Drawn By:	Checked By:	Date:
Seal & Signature	DASNY Project No:	
Drawing Number		A526.00
Drawing 47 of 52		