

GENERAL TERRA COTTA NOTES:

1. CONDUCT SITE SURVEY OF EXISTING TERRA COTTA ELEMENTS PRIOR TO SUBMITTAL OF SHOP DRAWINGS AND FABRICATION OF TERRA COTTA UNITS.
2. IDENTIFY AND CODE TERRA COTTA UNITS TO BE REPLACED.
3. ACTUAL TYPES AND NUMBERS OF TERRA COTTA UNITS TO BE VERIFIED BY ARCHITECT.
4. PROVIDE PHYSICAL SAMPLES, COLLECT MEASUREMENTS, TAKE PHOTOGRAPHS, MAKE FIELD SKETCHES AND RECORD OTHER DATA AS REQUIRED FOR DESIGN AND FABRICATION OF REPLACEMENT TERRA COTTA UNITS.
5. CAREFULLY REMOVE EXISTING UNITS. SALVAGE AND RESET UNITS IF NOT DAMAGED AND AS APPROVED / DIRECTED BY ARCHITECT.
6. SAMPLE AND DETERMINE COMPRESSIVE STRENGTH OF EXISTING MORTAR. IDENTIFY JOINTS TO BE REPOINTED.
7. ILLUSTRATIVE SAMPLES:
 - CAREFULLY REMOVE EXISTING TERRA COTTA UNITS REQUIRED AS SAMPLES TO USE IN PREPARATION OF MOLDS FOR FABRICATION OF REPLACEMENT PIECES.
 - PACK, CRATE AND DELIVER SAMPLES TO MANUFACTURER'S PLANT. SAMPLES SHALL BE RETAINED BY THE MANUFACTURER.
 - PROVIDE SHORING AND TEMPORARY PROTECTION TO PREVENT MOISTURE PENETRATION INTO STRUCTURE WHERE TERRA COTTA UNITS ARE REMOVED.
8. PROVIDE SHOP DRAWINGS SHOWING:
 - ELEVATIONS, SECTIONS AND DETAILS OF ORNAMENTATION OF EXISTING TERRA COTTA/CFRC TO BE REPLACED AND ADJACENT MATERIALS. DRAWINGS SHOULD INCLUDE CONSTRUCTION OF TERRA COTTA AND ITS RELATIONSHIP TO ADJACENT MATERIALS, PROFILES OF PIECES, DIMENSIONS, JOINT WIDTHS AND BUILT-IN WEEPS AND DRIP EDGES. DRAWINGS SHALL BE 1:8 MIN. SCALE. SHOP DRAWINGS SHALL ALSO INCLUDE RELIEVING ANGLES, VENTS, WEEPS, EXPANSION JOINTS. INDICATE LOCATION AND TYPE OF FLASHINGS TO BE USED.
 - SHOP DRAWINGS SHALL ALSO INCLUDE ANCHORAGE AND GROUTING DESIGNED BY A NYS LICENSED ENGINEER AND COORDINATED WITH TERRA COTTA MANUFACTURER'S REQUIREMENTS. ANCHORAGE DRAWINGS AND CALCULATIONS SHALL BE SUBMITTED AS ONE COMPLETE PACKAGE OF SHOP DRAWINGS.
 - SHOP DRAWINGS SHALL ALSO INCLUDE SETTING DRAWINGS SHOWING THE LAYOUT, NUMBERING AND JOINT SIZES OF TERRA COTTA UNITS.
 - ALL SHOP DRAWINGS, CALCULATIONS AND SETTING DRAWINGS SHALL BE SUBMITTED AS ONE PACKAGE TO ARCHITECT FOR REVIEW. ALL PRODUCTS AND CALCULATIONS ARE TO BE COORDINATED WITH EACH MANUFACTURER'S REQUIREMENTS.

LEGEND

- EXISTING BRICK MASONRY
- EXISTING TERRA COTTA UNITS
- NEW TERRA COTTA UNITS INCLUDED IN THE COMBINED SCOPE FOR BASE BID & ALTERNATES 1 & 3

TERRA COTTA SCOPE:

- BASE BID**
INCLUDES REPLACEMENT OF 25% OF TERRA COTTA UNITS IN THE SCOPE AS INDICATED BY THE LEGEND.
- ALTERNATE 1**
INCLUDES REPLACEMENT OF AN ADDITIONAL 25% OF TERRA COTTA UNITS IN THE SCOPE AS INDICATED BY THE LEGEND.
- ALTERNATE 3**
INCLUDES REPLACEMENT OF AN ADDITIONAL 50% OF TERRA COTTA UNITS IN THE SCOPE AS INDICATED BY THE LEGEND.

SCOPE OF WORK NOTES:

1. THE EXTENT OF TERRA COTTA REPLACEMENT AS PART OF BASE BID, ALTERNATE 1 AND ALTERNATE 3 IS TO BE DETERMINED BY ARCHITECT DURING INITIAL INSPECTION DURING CONSTRUCTION.
2. CONTRACTOR SHALL NOTIFY OWNER REPRESENTATIVE / ARCHITECT IF ADDITIONAL TERRA COTTA REPLACEMENT IS REQUIRED AND GET APPROVAL FOR ADDITIONAL SCOPE PRIOR TO PROCEEDING WITH REPAIR WORK.

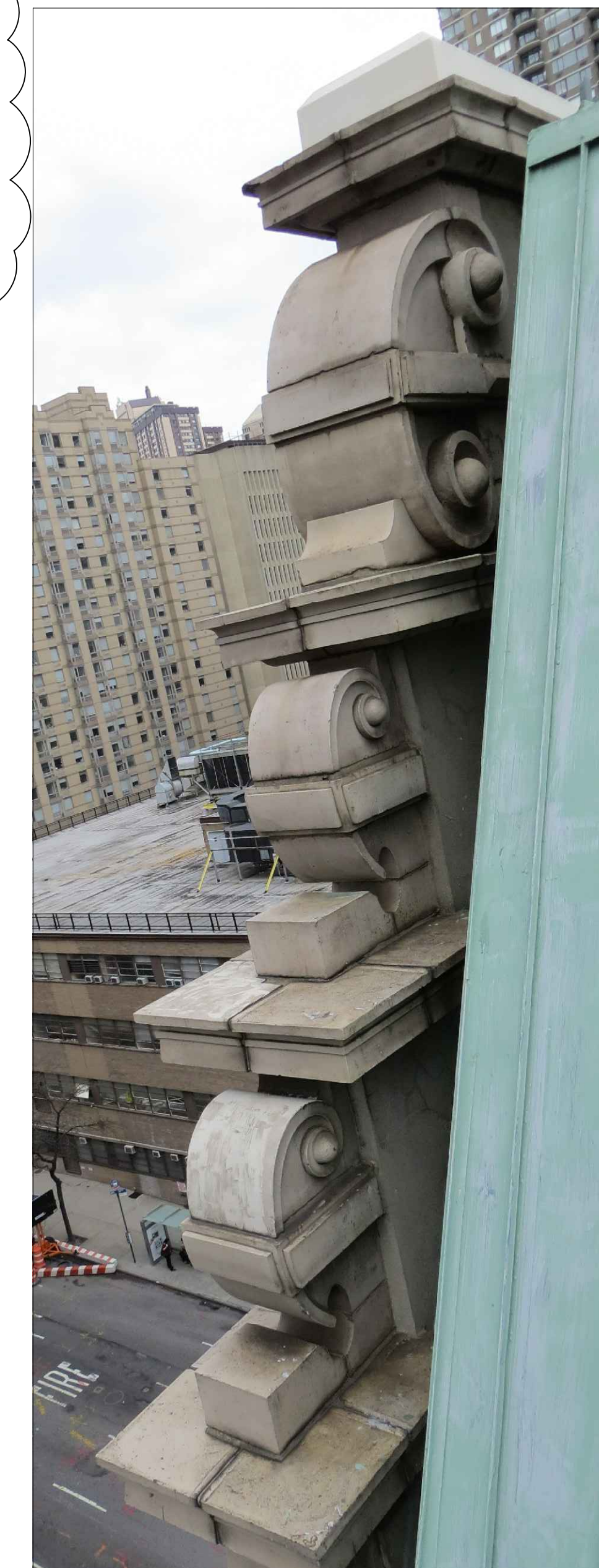


PHOTO IS REPRESENTATIVE OF GABLE CONFIGURATION

CAREFULLY REMOVE EXISTING DAMAGED TERRA COTTA UNITS; USE HAND TOOLS ONLY. REPLACE W/NEW

- 040130 **TERRA COTTA UNITS** MATCHING EXISTING T.C. CONFIGURATION, TYPE, FINISH, COLOR AND ANCHORING SYSTEM (TYP.)
- 040513 **MORTAR: ASTM C270 TYPE N**; TOOLING TO MATCH EXISTING.

NOTES:

1. T.C. PROFILES AND ANCHORING ARE SHOWN SCHEMATICALLY. VERIFY IN FIELD.
2. EXPOSED WALL FACES MUST HAVE A MIN. 1" THICKNESS.
3. SETTING BEDS MUST HAVE A MIN. 4" DEPTH.
4. PROVIDE PROJECTING PIECES WITH DRIPS.
5. FLASHINGS AND SHEET METAL SHALL BE EMBEDDED IN T.C. JOINTS A MIN. OF 3/4" OR HAVE REGLETS FORMED IN T.C. PIECES.
6. EXAMINE EXISTING CONDITION AND PROVIDE AS REQUIRED GABLE FRAME/BRACING REINFORCEMENT SHOP DRAWINGS, SIGNED, AND SEALED BY PROFESSIONAL ENGINEER LICENSED IN NEW YORK STATE.
7. REPAIR EXISTING GABLE STEEL FRAME/BRACING AS REQUIRED.
8. SCRAPE AND PAINT ANY EXPOSED STEEL FRAME MEMBERS WITH 099713 **COATING: 3ER.**

PREPARE SUBSTRATE AND APPLY **LIQUID APPLIED FLASHING**, 2 PLY, TO EXPOSED HORIZONTAL FACES OF EXISTING MASONRY

NOTE:
EXTEND FLASHING VERTICALLY 2" MIN. AT ALL TERMINATION POINTS.

LIQUID APPLIED FLASHING NOTES:

1. PREPARE AND APPLY 076200 **SUBSTRATE PRIMER** TO ALL SURFACES IN CONTACT WITH RESIN.
2. PREPARE LEVEL AND PATCH SUBSTRATE AS REQUIRED WITH APPROVED BY MANUFACTURER
- 076200 **PATCHING COMPOUND** PRIOR TO APPLICATION OF PRIMER AND MEMBRANE FLASHING ON VERTICAL SURFACES.

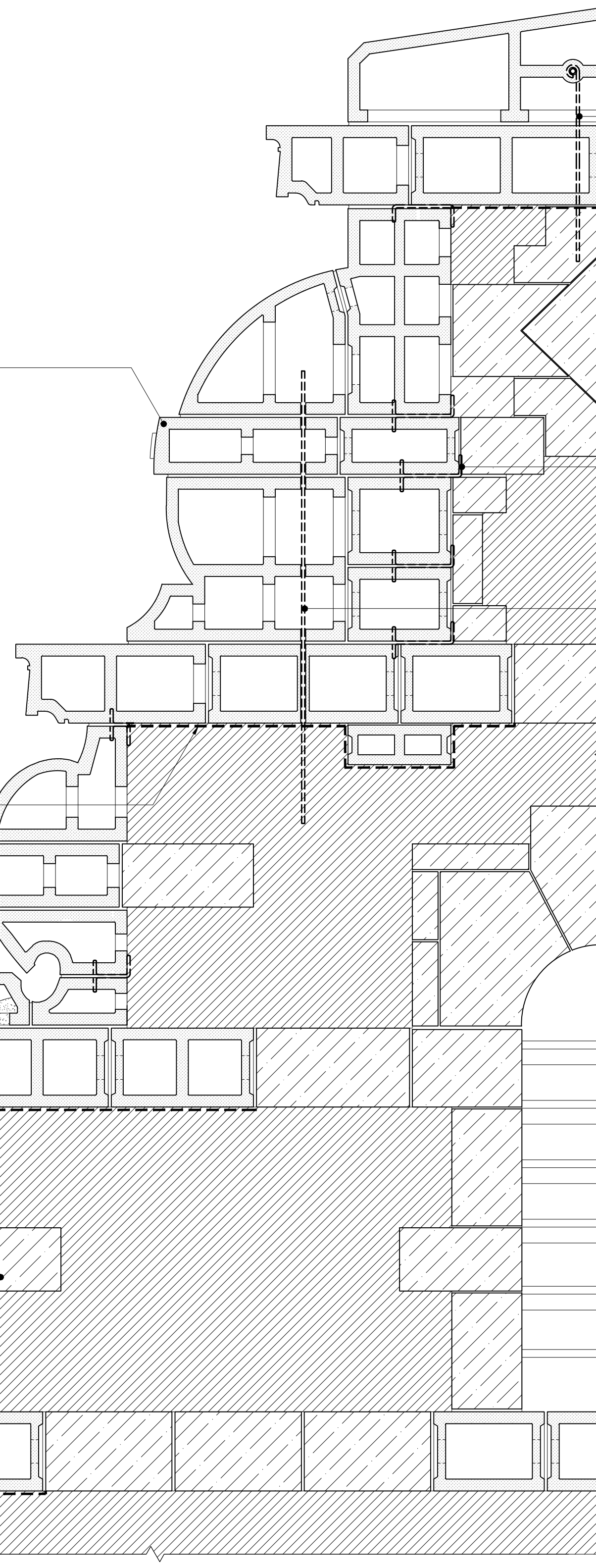
EXISTING BACK-UP MASONRY; VERIFY CONDITION.

- 024119 CAREFULLY REMOVE ANY DAMAGED EXISTING BRICK MASONRY AND REPLACE W/
- 040120 **BRICK: ASTM C216, GRADE SW** MATCH EXISTING COLOR, SIZE AND BOND PATTERN
- 040513 **MORTAR: ASTM C270 TYPE N**; TOOLING TO MATCH EXISTING

SHORE AND PROTECT EXISTING TERRA COTTA UNITS TO REMAIN. IF DAMAGED, REMOVE AND REPLACE W/NEW TERRA COTTA UNITS TO MATCH EXISTING.

T2 / A527
INDIVIDUAL SMALL UNIT REPLACEMENT APPLIES TO ALL SIMILAR CONDITIONS

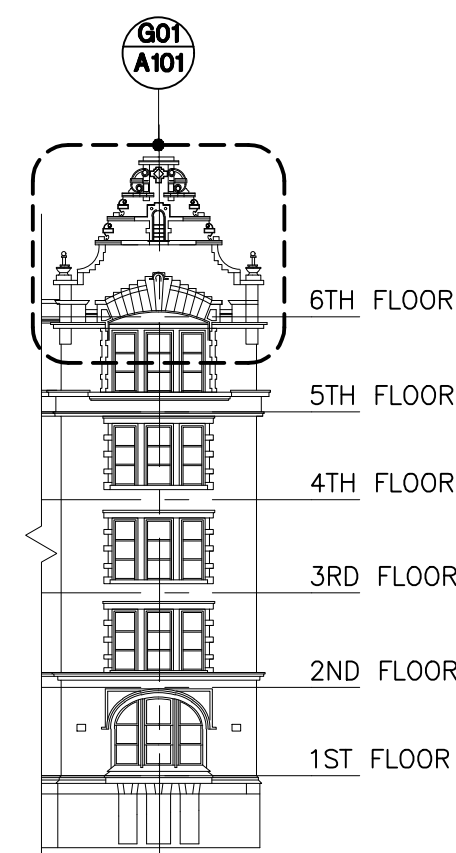
SECTION - REPRESENTS HALF OF GABLE



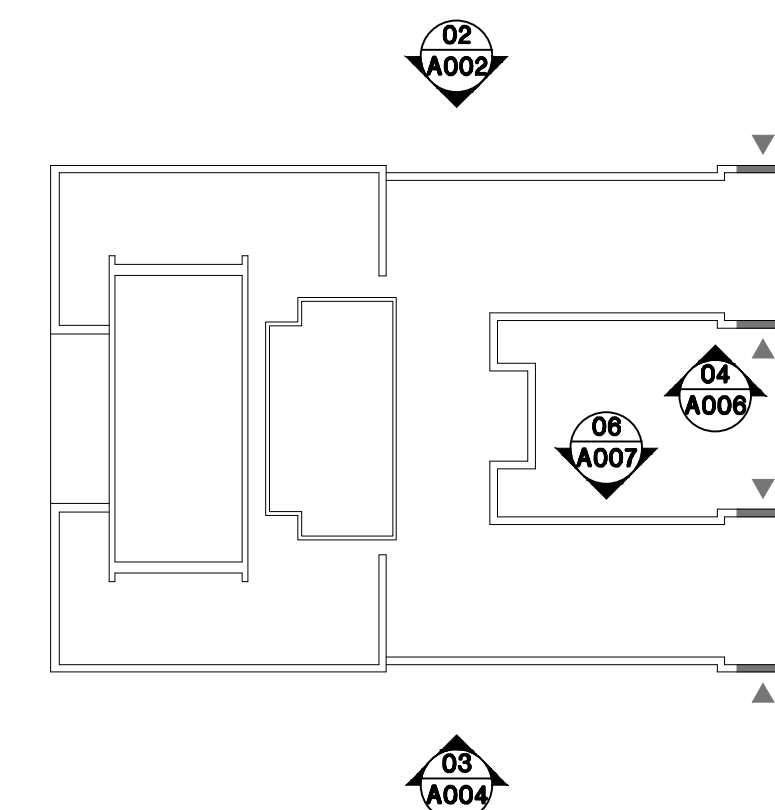
T6 / A528
COPING STONE UNIT REPLACEMENT APPLIES TO ALL SIMILAR CONDITIONS

T1 / A527
MULTIPLE SMALL UNIT REPLACEMENT APPLIES TO ALL SIMILAR CONDITIONS

T5 / A527
VERTICAL PROJECTION UNIT REPLACEMENT APPLIES TO ALL SIMILAR CONDITIONS



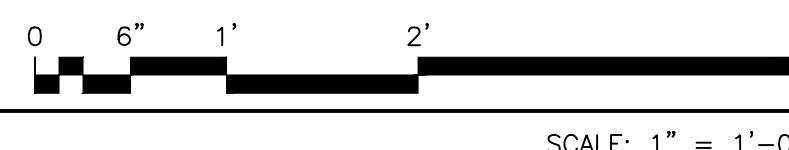
PARTIAL ELEVATION



PLAN

KEY ELEVATION & PLAN (TYP.)

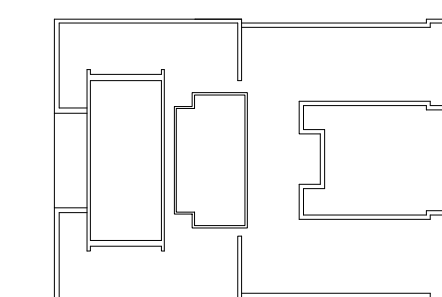
TRC 01 - BASE BID / ALTERNATE 1/3
TERRA COTTA REPLACEMENT AT GABLE TYPE 01 (EA)



SCALE: 1" = 1'-0"

SUPER STRUCTURES
ENGINEERS ARCHITECTS

32 AVE OF THE AMERICAS
NEW YORK, NY 10013
TEL: 212 505 1833
FAX: 212 505 1728



RESTORATION ASSEMBLY DETAILS: TRC 01

Drawn By: _____ Checked By: _____ Date: _____

Seal & Signature

DASNY Project No:

Drawing Number

A518.00

Drawing 41 of 52