

GABLE 01 TERRA COTTA SCHEDULE		
UNIT REFERENCE NO.	QUANTITIES	UNIT DESCRIPTION
G01	1	GABLE UNIT
G02	2	GABLE UNIT
G03	8	GABLE UNIT
G04	2	GABLE UNIT
G05	1	GABLE UNIT
G06	1	GABLE UNIT
G07	1	GABLE UNIT
G08	2	GABLE UNIT
G09	2	GABLE UNIT
G10	2	GABLE UNIT
G11	2	GABLE UNIT
G12	1	GABLE UNIT
G13	2	GABLE UNIT
G14	2	GABLE UNIT
G15	2	GABLE UNIT
G16	2	GABLE UNIT
G17	2	GABLE UNIT
G18	2	GABLE UNIT
G19	2	GABLE UNIT
G20	2	GABLE UNIT
G21	4	GABLE UNIT
G22	4	GABLE UNIT
G23	4	GABLE UNIT
G24	2	GABLE UNIT
G25	2	GABLE UNIT
G26	2	GABLE UNIT
G27	2	GABLE UNIT
G28	2	GABLE UNIT
G29	2	GABLE UNIT
G30	2	GABLE UNIT
G31	4	GABLE UNIT
G32	4	GABLE UNIT
G33	4	GABLE UNIT
G34	2	GABLE UNIT
G35	2	GABLE UNIT
G36	2	GABLE UNIT
G37	2	GABLE UNIT
G38	2	GABLE UNIT

G39	2	GABLE UNIT
G40	6	GABLE UNIT
G41	4	GABLE UNIT
G42	4	GABLE UNIT
G43	4	GABLE UNIT
G44	2	GABLE UNIT
G45	2	GABLE UNIT
G46	2	GABLE UNIT
G47	2	GABLE UNIT
G48	2	GABLE UNIT
	119	
N01	1	BLIND NICHE
N02	2	BLIND NICHE
N03	2	BLIND NICHE
N04	2	BLIND NICHE
N05	2	BLIND NICHE
N06	2	BLIND NICHE
N07	2	BLIND NICHE
N08	2	BLIND NICHE
N09	2	BLIND NICHE
N10	2	BLIND NICHE
N11	1	BLIND NICHE
N12	1	BLIND NICHE
N13	1	BLIND NICHE
	22	
V01	1	VOUSSOIR
V02	1	VOUSSOIR
V03	1	VOUSSOIR
V04	1	VOUSSOIR
V05	1	VOUSSOIR
V06	1	VOUSSOIR
V07	1	VOUSSOIR
V08	1	VOUSSOIR
V09	1	VOUSSOIR
V10	1	VOUSSOIR
V11	1	VOUSSOIR
V12	1	VOUSSOIR
V13	1	VOUSSOIR
V14	1	VOUSSOIR
V15	1	VOUSSOIR

V16	1	VOUSSOIR
V17	1	VOUSSOIR
V18	4	VOUSSOIR
V19	2	VOUSSOIR
V20	2	VOUSSOIR
V21	4	VOUSSOIR
V22	2	VOUSSOIR
V23	2	VOUSSOIR
V24	1	VOUSSOIR
V25	1	VOUSSOIR
V26	1	VOUSSOIR
V27	1	VOUSSOIR
V28	1	VOUSSOIR
V29	1	VOUSSOIR
V30	1	VOUSSOIR
V31	1	VOUSSOIR
V32	1	VOUSSOIR
V33	1	VOUSSOIR
V34	1	VOUSSOIR
V35	1	VOUSSOIR
V36	1	VOUSSOIR
V37	1	VOUSSOIR
V41	1	VOUSSOIR
V42	1	VOUSSOIR
V43	1	VOUSSOIR
V44	1	VOUSSOIR
V45	1	VOUSSOIR
V46	1	VOUSSOIR
V47	1	VOUSSOIR
V48	1	VOUSSOIR
V49	1	VOUSSOIR
V50	1	VOUSSOIR
V51	1	VOUSSOIR
V52	1	VOUSSOIR
V53	1	VOUSSOIR
V54	1	VOUSSOIR
V55	1	VOUSSOIR
V56	1	VOUSSOIR
V57	1	VOUSSOIR
V58	1	VOUSSOIR

V59	1	VOUSSOIR
V60	1	VOUSSOIR
V61	1	VOUSSOIR
V62	1	VOUSSOIR
V63	1	VOUSSOIR
	107	
P01	2	PIER
P02	2	PIER
P03	2	PIER
P04	2	PIER
P05	2	PIER
P06	2	PIER
P07	2	PIER
P08	2	PIER
P09	8	PIER
P10	8	PIER
P11	12	PIER
P12	12	PIER
P13	12	PIER
P14	3	PIER
P15	3	PIER
P16	2	PIER
P17	2	PIER
P18	2	PIER
P19	2	PIER
P20	2	PIER
	84	
L01	1	LINTEL
L02	2	LINTEL
L03	2	LINTEL
L04	2	LINTEL
L05	2	LINTEL
L06	2	LINTEL
L07	1	LINTEL
L08	1	LINTEL
L09	1	LINTEL
L10	1	LINTEL
L11	1	LINTEL
	15	
F01	2	FINIAL

LEGEND

INDICATES EXTENTS OF EXISTING TERRA COTTA, GFRC & BRICK MASONRY INCLUDED IN THE COMBINED SCOPE FOR BASE BID & ALTERNATES

GENERAL NOTE:

REFER TO OVERALL ELEVATIONS (A001-A008) FOR EXACT LOCATIONS AND QUANTITIES OF REPAIRS

TERRA COTTA SCOPE:

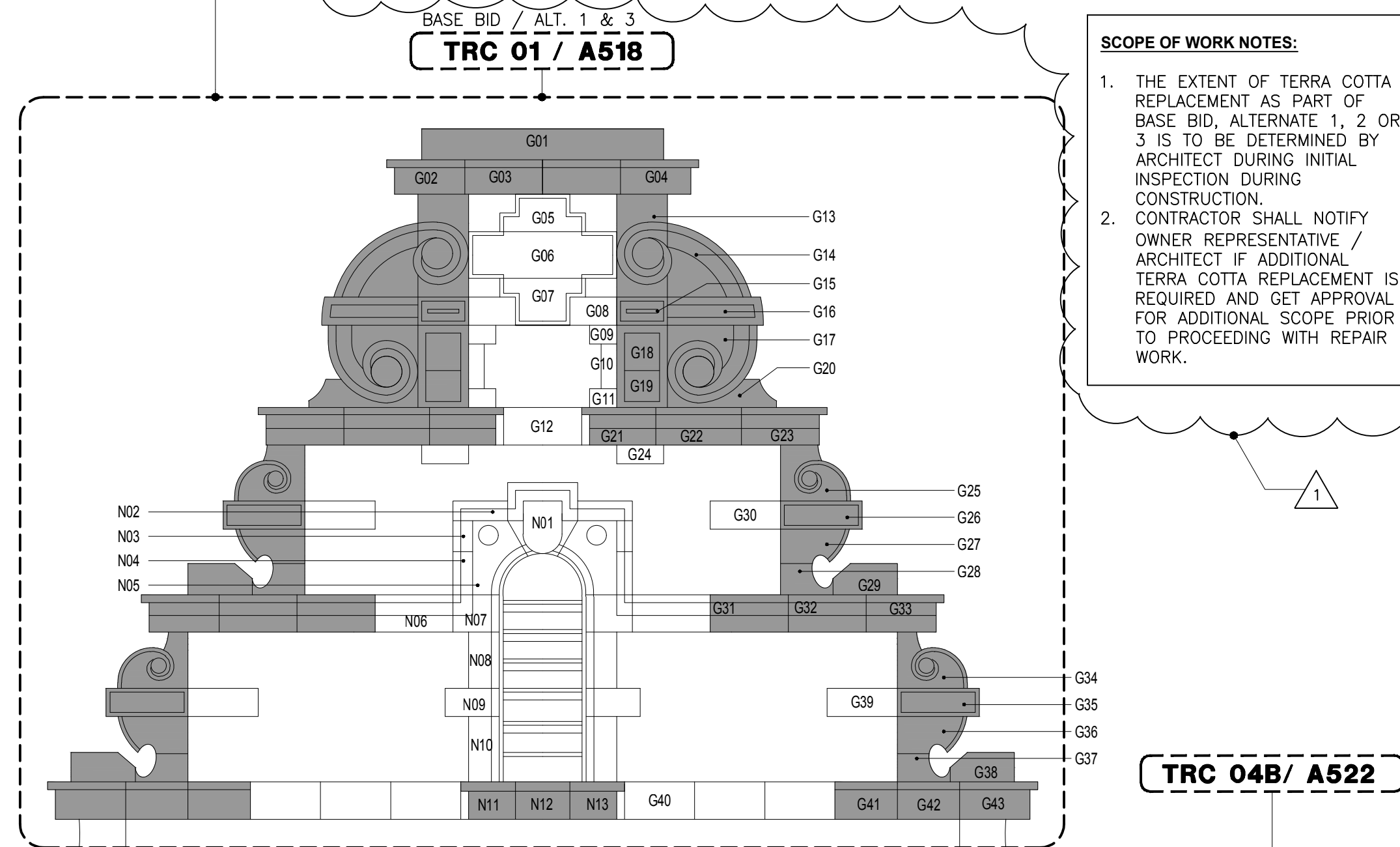
BASE BID
INCLUDES REPLACEMENT OF 25% OF TERRA COTTA UNITS IN THE SCOPE AS INDICATED BY THE LEGEND.

ALTERNATE 1
INCLUDES REPLACEMENT OF AN ADDITIONAL 25% OF TERRA COTTA UNITS IN THE SCOPE AS INDICATED BY THE LEGEND.

ALTERNATE 3
INCLUDES REPLACEMENT OF AN ADDITIONAL 50% OF TERRA COTTA UNITS IN THE SCOPE AS INDICATED BY THE LEGEND.

SCOPE OF WORK NOTES:

- THE EXTENT OF TERRA COTTA REPLACEMENT AS PART OF BASE BID, ALTERNATE 1, 2 OR 3 IS TO BE DETERMINED BY ARCHITECT DURING INITIAL INSPECTION DURING CONSTRUCTION.
- CONTRACTOR SHALL NOTIFY OWNER REPRESENTATIVE / ARCHITECT IF ADDITIONAL TERRA COTTA REPLACEMENT IS REQUIRED AND GET APPROVAL FOR ADDITIONAL SCOPE PRIOR TO PROCEEDING WITH REPAIR WORK.



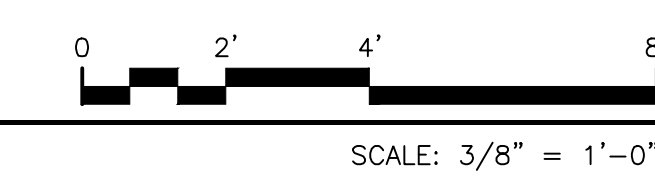
TRC 04A/ A522

BASE BID / ALT. 2
TRC 08 / A524

TRC 04B/ A522

COP 03 / A506

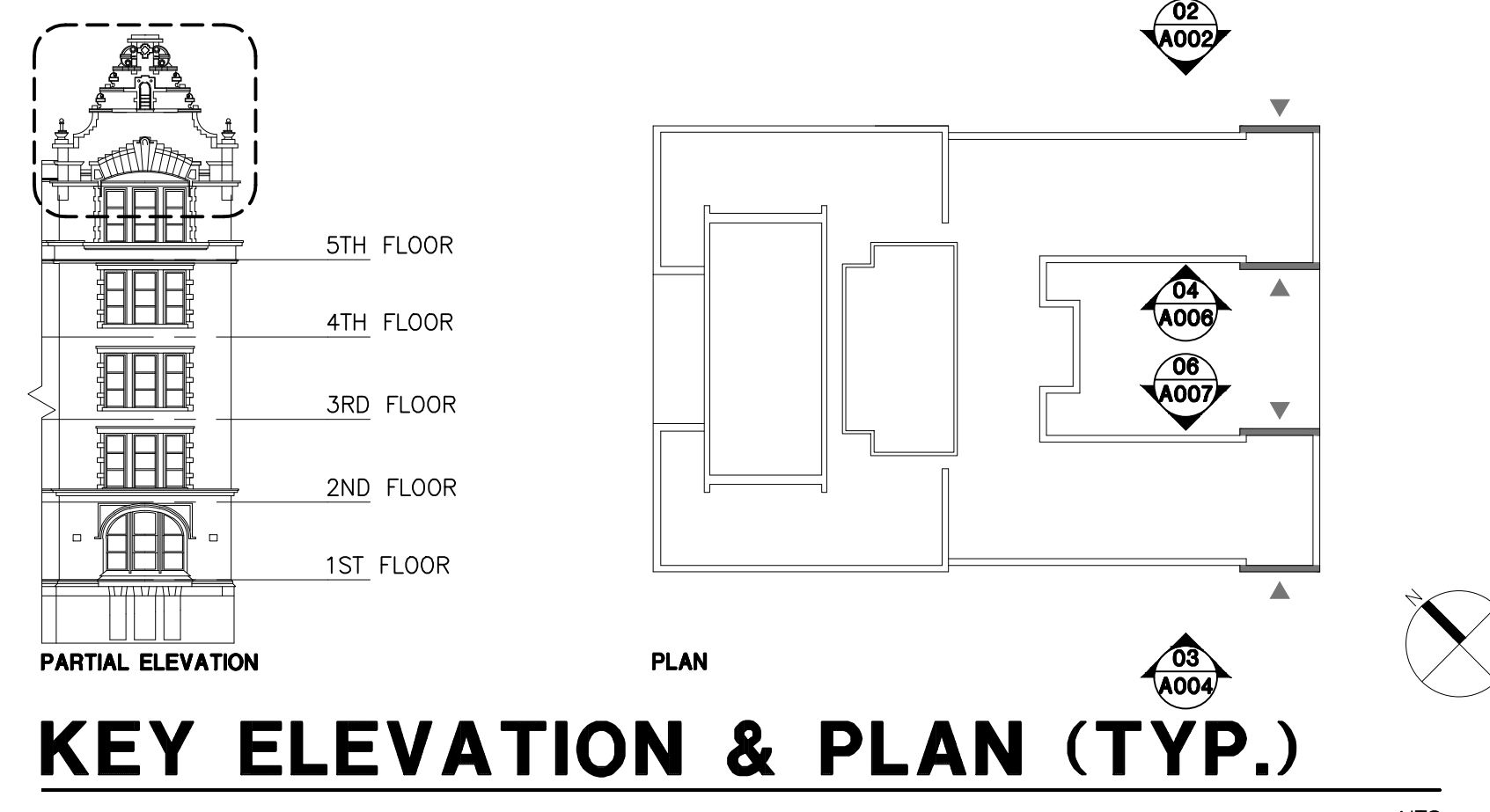
TRC 14 / A525



GABLE 01 - TYPICAL
COURTYARD SOUTH PARTIAL ELEVATION



GABLE 01 PHOTOGRAPHS



KEY ELEVATION & PLAN (TYP.)

SUPER STRUCTURES
ENGINEERS ARCHITECTS
32 AVE OF THE AMERICAS
NEW YORK, NY 10013
TEL: 212 505 1833
FAX: 212 505 1728

GABLE 01

Drawn By: _____ Checked By: _____ Date: _____

Seal & Signature _____ DASNY Project No: _____

Drawing Number
A101.00

Drawing 14 of 52

NTS

NTS